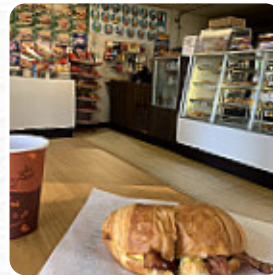
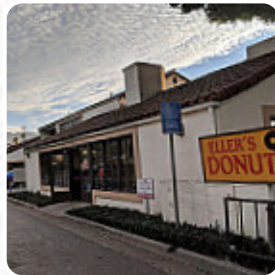




## *Eller's Donut House Menu*

<https://menulist.menu>  
22 N Milpas St B, 93103, Santa Barbara, US, United States  
**+18059669001**



The restaurant from Santa Barbara offers 66 different **dishes and drinks on [the card](#)** at an average \$4.7. What [User](#) likes about Eller's Donut House: do not go elsewhere in sb for their donuts. that's the best. we ordered three different to share and we were not disappointed. the employees were helpful when they were asking for certain, for example, what with what. [read more](#). A visit to Eller's Donut House becomes even more rewarding due to the extensive selection of **coffee and tea specialties**.

# Eller's Donut House Menu



## Bagels

BAGELS \$2.8

## Main

BAGEL SANDWICH \$5.0

## Milchshakes

SMOOTHIE

## Tea/Koffee/Milk

MILK TEA \$4.0

## Tea

GREEN TEA \$4.0

## Breakfast Menu

HAM BACON EGG CHEESE \$4.9

## Hot Drink

HOT CHOCOLATE \$1.7

## Froid

ICE COFFEE \$3.0

## Boar's Head Cold Cut Specialties

ROAST BEEF (BAGEL) \$5.8

## Ingredients Used

APPLE

## Beverages

MILK (LARGE) \$2.0

BOBA DRINK \$5.0

## Coffee

COFFEE \$2.3

COFFEE

## Dessert

BARS \$1.3

JELLY \$1.3

DONUTS

## Sandwiches

TUNA (SANDWICH) \$6.0

ROAST BEEF (SANDWICH) \$5.8

TURKEY (SANDWICH) \$5.5

PASTRAMI (SANDWICH) \$5.5

## Specials

DOUGH NUT HOLES SPECIAL \$1.3

BAR (6) SPECIAL \$7.0

ROUND MIX SPECIAL \$12.0

SPRINKLE GLAZE (12) SPECIAL \$12.0

GLAZE DONUT SPECIAL \$1.0

BAR (6) ROUND (6) SPECIAL \$12.0

ROUND (6) SPECIAL \$6.0

BAR MIX SPECIAL \$13.5

CAKE DONUT SPECIAL \$1.0

## Featured Items

BIG PIECES \$2.3

# Eller's Donut House Menu



PASTRAMI (CROISSANT)	\$5.9	HORCHATA KAFE NEO ICED COFFEE	\$4.0
ROAST BEEF (TOAST)	\$6.0	PISTACHIO KAFE NEO ICED COFFEE	\$4.0
TURKEY (BAGEL)	\$6.0	CAPPUCCINO VANILLA KAFE NEO ICED COFFEE	\$3.0
HAM, BACON, EGG CHEESE (TOAST)	\$4.5	HONEYDEW KAFE NEO ICED COFFEE	\$4.0
TURKEY (CROISSANT)	\$6.0	TARO KAFE NEO ICED COFFEE	\$4.0
PASTRAMI (TOAST)	\$5.9	THAI TEA KAFE NEO ICED COFFEE	\$4.0
HAM, BACON, EGG CHEESE (BAGEL)	\$4.5	STRAWBERRY KAFE NEO ICED COFFEE	\$4.0
TURKEY (TOAST)	\$6.0	COCONUT KAFE NEO ICED COFFEE	\$4.0
TUNA (BAGEL)	\$6.0	CHAI TEA SPICE LATTE	\$4.0
PASTRAMI (BAGEL)	\$5.9	PINEAPPLE KAFE NEO ICED COFFEE	\$4.0
TUNA (CROISSANT)	\$6.0	STRAWBERRY INFUSED KAFE NEO ICED COFFEE	\$4.0
ROAST BEEF (CROISSANT)	\$5.9	VANILLA LATTE KAFE NEO ICED COFFEE	\$4.0
HAM (TOAST)	\$5.9	BUBBLE GUM KAFE NEO ICED COFFEE	\$4.0
CROISSANT MUFFINS	\$2.3	WHITE CHOCOLATE LATTE KAFE NEO ICED COFFEE	\$4.0
<b><i>Kafe Neo Iced Coffee</i></b>		CARAMEL LATTE KAFE NEO ICED COFFEE	\$4.0
MANGO KAFE NEO ICED COFFEE	\$4.0	PASSION FRUIT KAFE NEO ICED COFFEE	\$4.0
JAVA CHIP KAFE NEO ICED COFFEE	\$4.0		
COOKIES 'N CREAM KAFE NEO ICED COFFEE	\$4.0		
PEACH KAFE NEO ICED COFFEE	\$4.0		
MOCHA KAFE NEO ICED COFFEE	\$4.0		

# *Eller's Donut House Menu*



## *Eller's Donut House*

22 N Milpas St B, 93103, Santa  
Barbara, US, United States

### **Opening Hours:**

Monday 05:30 -13:00  
Tuesday 05:30 -13:00  
Wednesday 05:30 -13:00  
Thursday 05:30 -13:00  
Friday 05:30 -13:00  
Saturday 05:30 -13:00  
Sunday 05:30 -13:00

Made with [menulist.menu](https://menulist.menu)

 gallery image

