

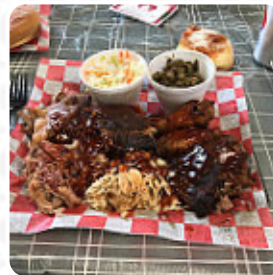
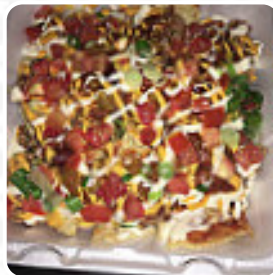


Pat's Bbq Catering Menu

<https://menulist.menu>

111 Tower Rock Ln, Murphysboro, United States Of America

+16186874227



The restaurant from [Murphysboro](#) offers **37** different *dishes and drinks* on [the menu](#) at an average \$6.8. What [User](#) likes about Pat's Bbq Catering:

The good is absolutely delicious! The meat is delicate, well seasoned has a great smoke taste that grill is all over. Each of the pages offered is just as delicious, but I am part of the baked beans. The loaded baked potato is the sky on a plate of the BBQ Sundae is a real treat, which I didn't think I would like to, but is one of my menu items. The staff could not be nicer or more professional the prices are a steal... [read more](#). The premises on site are wheelchair accessible and can also be used with a wheelchair or physiological limitations, Depending on the weather conditions, you can also sit outside and be served. The **catering service** is also provided by the establishment for its customers, Here, the meat is freshly grilled on an open flame. fresh fish, meat, as well as corn and potatoes are also South American grilled here, and you have the opportunity to try delicious American menus like Burger or Barbecue.

Pat's Bbq Catering Menu



Non alcoholic drinks

ROOT BEER

Alcoholic Drinks

BEER

Appetizers

RIB TIP \$9.0

Main courses

RIBS

Salad

COLE SLAW \$1.5

Starters

BBQ SUNDAE \$6.0

Indian

FOLIENKARTOFFEL

Kraut & Rüben

MAC AND CHEESE

Baked Potatoes

LOADED BAKED POTATO

Main

PULLED PORK \$9.0

Appetizer

SAMPLE \$12.0

Banh Mis

PULLED CHICKEN \$9.0

Black Angus Beef Burger

BLACK AND BLUE \$7.0

Carni - Fleischspezialitäten

PORK STEAK \$9.0

Beverages

WATER SODA \$1.0

Hot drinks

TEA \$2.0

Sweets & Desserts

SUNDAE

Plates

1/2 LB WING \$9.0

Baby Back Ribs

FULL RACK \$21.0

Meat Selections

1/2 CHICKEN \$9.0

Ribs & Chicken

1/2 RACK \$14.0

Bulk Meat By The Pound

BRISKET

Pat's Bbq Catering Menu



Restaurant Category

BBQ

These types of dishes are being served

TURKEY

Salads

POTATO SALAD \$1.5

SIDE SALAD \$3.0

Side dishes

GRILLED GREEN BEAN \$1.5

SMOKED MAC N CHEESE \$1.5

BAKED BEANS \$1.5

LOADED POTATO \$7.0

Ingredients Used

POTATOES

BEANS

MEAT

BEEF BRISKET \$9.0

CHEESE

CRUDE

PORK MEAT

Pat's Bbq Catering Menu



Pat's Bbq Catering

111 Tower Rock Ln,
Murphysboro, United States Of
America

Opening Hours:
Monday 10:00-14:00
Tuesday 10:00-14:00
Wednesday 10:00-14:00
Thursday 10:00-19:00
Friday 10:00-19:00
Saturday 10:00-19:00

Made with menulist.menu

