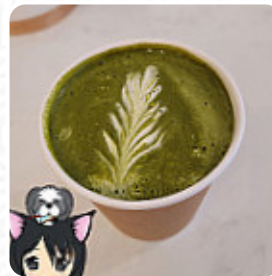
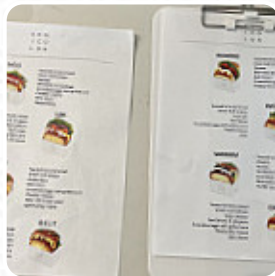
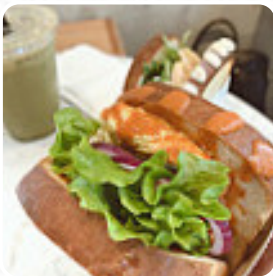




## ***Semicolon Cafe Menu***

<https://menulist.menu>

10451 NE 2nd St, 98004, Bellevue, US, United States  
(+1)4252235932 - <http://www.semicolonbellevue.com/>



Here you can find the [menu](#) of *Semicolon Cafe* in Bellevue. At the moment, there are 37 meals and drinks on the menu. You can inquire about changing offers via phone. What [User](#) likes about Semicolon Cafe: super nice Korean cafe in Bellevue! I have the specialty tiramisu latte and bulgogi sandwich on Saturday. To the luck we came there before a huge amount came and could find a small table. The latte was sweet and tasteful (which I like), although some people find it too sweet. The Bulgogi sandwich was delicious filling. I loved the Mayo topping and thought the texture of the flesh was perfect, although I wish it had... [read more](#). The restaurant is accessible and can therefore also be used with a wheelchair or physical limitations, and there is no-charge WiFi.

What [User](#) doesn't like about Semicolon Cafe:

Environment: 5/5; Food: 5/5; coffee: 4/5; Service: 2/5. Came here with my friend for the first time. We ordered bulgogi and chicken sandwiches, both taste good. But we found hair in the beef and got a replacement, no refund. It was Saturday 10 o'clock, the waiting time for eating was not too crazy. We also ordered tiramisu latte. It tastes good, but too sweet to finish the whole cup, and it took > 20 minutes to finish t... [read more](#). At Semicolon

Cafe in Bellevue, a **delicious brunch** is served for breakfast, where you can eat as much as you want feast. Among the visitors, especially **flavorful juices** are highly sought after. Not to be left out is the extensive selection of **coffee and tea specialties** in this restaurant. In addition, you'll find sweet delicacies, cake, small snacks and chilled refreshments and hot beverages here.

# Semicolon Cafe Menu



## Süße Desserts

TIRAMISU

## Toast

TOAST

## Side Orders

MAYO

## Breakfast

BREAKFAST SANDWICH

## Beef dishes

BULGOGI

## Dessert

MATCHA

## Soft drinks

LEMONADE

## Milchshakes

SMOOTHIE

## Drinks

DRINKS

## Speciality Beverages

COLD BREW

## Biscuits and Cookies

CHEESECAKE

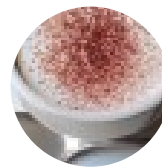
## Condiments and Sauces

MUSHROOM

## Nut Milks

ALMOND MILK

## Coffee



MOCHA

COFFEE

MATCHA LATTE

## These types of dishes are being served

PANINI

TOSTADAS

BREAD

SANDWICH

## Sandwiches

CHICKEN SANDWICH

CHEESE SANDWICH

HAM AND CHEESE

THE VEGGIE

HAM SANDWICH

## Ingredients Used



CRUDE

CHICKEN

MANGO

EGGS

EGG

MILK

# *Semicolon Cafe Menu*

**AVOCADO**

**STRAWBERRY**

**CHEESE**

**BACON**

**BEEF**

**MEAT**



# *Semicolon Cafe Menu*



## *Semicolon Cafe*

10451 NE 2nd St, 98004,  
Bellevue, US, United States

### **Opening Hours:**

Monday 08:00 -17:00  
Tuesday 08:00 -17:00  
Wednesday 08:00 -17:00  
Thursday 08:00 -17:00  
Friday 08:00 -17:00  
Saturday 08:00 -17:00  
Sunday 08:00 -17:00

Made with [menulist.menu](https://menulist.menu)

 gallery image

