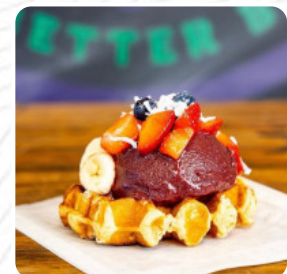
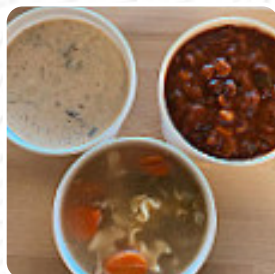




Yardley Week Menu

<https://menulist.menu>

ServiceMaster, 25 S Main St, Morrisville, PA, 19067, USA, United States
(+1)2152537718



On this site, you can find the **complete [menu](#) of Yardley Week** from Morrisville. Currently, there are 21 meals and drinks available. For **seasonal or weekly deals**, please contact the restaurant owner directly. You can also contact them through their website. What [User](#) likes about Yardley Week:

delicious and fresh smoothies and dishes. recommend the Açai bowl with keksbutter and for the children the green smoothie (perfect wise to sneak in some vegetables). the staff was very friendly and service fast. perfect place for the whole family. [read more](#). The place also offers the possibility to sit outside and eat in nice weather, And into the accessible spaces also come customers with wheelchairs or physical disabilities. WiFi is available for free. At Yardley Week in Morrisville, crispy pizza is baked fresh using a traditional method, Among the guests, especially flavorful **juices** are highly sought after. Not to be overlooked is also the extensive selection of coffee and tea specialties in this locale, In addition, you'll find sweet delicacies, cake, simple snacks and chilled refreshments and hot drinks here.

Yardley Week Menu

Extras

GINGER

Milchshakes

SMOOTHIE

Breakfast Menu

GRANOLA

Popular Items

SMOOTHIES

Breakfasts

ACAI BOWL

Coffee

COFFEE

Speciality Beverages

COLD BREW

Plates Brunch

WAFFLE

***These types of dishes are
being served***

PIZZA

Soft drinks

JUICE

ORANGE JUICE

Non alcoholic drinks

KOMBUCHA

WATER

LEMON

Ingredients Used

BANANA

RASPBERRY

ANANAS CHICKEN

MANGO

FRUIT

KALE

VEGETABLES



Yardley Week Menu



Yardley Week

ServiceMaster, 25 S Main St,
Morrisville, PA, 19067, USA,
United States

Opening Hours:

Monday 08:30 -18:30
Tuesday 08:30 -18:30
Wednesday 08:30 -18:30
Thursday 08:30 -18:30
Friday 08:30 -18:30
Saturday 08:30 -18:30
Sunday 08:30 -18:30

Made with menulist.menu

