

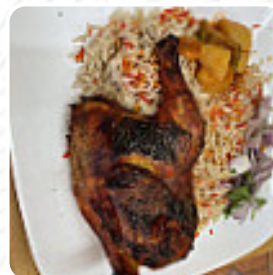


## Queen Of Sheba Menu

<https://menulist.menu>

3314 Eastern Ave, 21224, Baltimore, US, United States

(+1)4438859585 - <https://mymozo.com/myrestaurant/default>



[The Menu](#) of Queen Of Sheba from Baltimore includes about 24 different menus and drinks. On average, you pay for a dish / drink about \$11.1. What [User](#) likes about Queen Of Sheba:

Great place, Great food, Very extend Menu options, a little small and cozy place. Was there tonight and Need to post a review. I need to recommend this Gem?100%The customer service was great, provided by Fatima. She was our waitress and also made our food, which was delicious, the lamb sooo so soft and tender. Very Quick service too, within 15 minutes In we're eating. I really liked everything about it. I would recom... [read more](#). What

[User](#) doesn't like about Queen Of Sheba:

We ordered the chicken haneeth and the lamb haneeth. We came from the middle east so we have a, more or less, crude sense of what it should taste like. The chicken was tender but it could have a bit more mandi flavor. [read more](#). Whether you opt for a tasty flatbread which is refined with a spicy garlic paste, or crispy falafel, the cuisines from the *Middle East* are almost like a mini-vacation - rounded off with honey-like, crispy baklava, you can return satisfied to your daily life, Moreover, there are good to digest **Mediterranean meals** available.

# Queen Of Sheba Menu



## *Sandwiches*

LIVER SUB \$8.0

## *Breakfast*

MEAT CHUNKS \$12.0

## *Vegetarian dishes*

PITA

## *Starters*

LAMB WITH GRAVY \$18.0

## *Poultry*

FAHSAH FISH \$13.0

## *Sub's*

CHICKEN SUB \$6.0

## *Popular Items*

LAMB HANEETH \$18.0

## *Authentic Dishes*

LAMB FAHSAH \$11.0

## *Salads and Side Orders*

PITA BREAD

## *Condiments and Sauces*

HUMMUS

## *Restaurant Category*

MEDITERRANEAN

## *Milchshakes*

MANGO SMOOTHIE

SMOOTHIE

## *Appetizers*

LAMB LIVER \$11.0

BABA GHANOUJ \$7.0

FATTOUSH SALAD \$7.0

## *Ingredients Used*

MEAT

TRAVEL

MANGO

CHICKEN

*These types of dishes are being served*

BREAD

SOUP

SALAD

LAMB

# *Queen Of Sheba Menu*



## *Queen Of Sheba*

3314 Eastern Ave, 21224,  
Baltimore, US, United States

### **Opening Hours:**

Monday 10:00 -22:00  
Tuesday 10:00 -22:00  
Wednesday 10:00 -22:00  
Thursday 10:00 -22:00  
Friday 10:00 -22:00  
Saturday 10:00 -22:00  
Sunday 10:00 -22:00

Made with [menulist.menu](https://menulist.menu)

 gallery image

