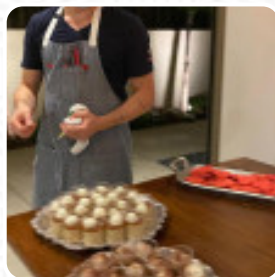
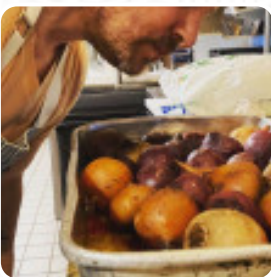




E Baldi Menu

<https://menulist.menu>
365 N Canon Dr, CA 90210-4704, United States, Beverly Hills
(+1)3102482633 - <http://ebaldi.com/>



The place from Beverly Hills offers **71** different meals and drinks on the card at an average \$16.9. What [User](#) likes about E Baldi:

Excellent culinary experience, Minstrone was fantastic as well as the Caesar salad with spicy croutons. Nice cozy atmosphere, friendly staff. Baldi is always a guarantee for amazing food. [read more](#). When the weather is pleasant you can also be served outside. What [User](#) doesn't like about E Baldi:

Watch this tourist trap. Great prices. Common ambience. Less than average food quality. Skilled orders. Had pasta with Langostinos. Get a plate of overcooked pasta and a little longostino cut in half. Hard 2 bites. The most important courses were literally taken to our table as the first course dishes were deleted from the table. Place bread on the table without olive oil and no butter. We asked for oil and balsamicu... [read more](#). In E Baldi, a restaurant that serves Italian menus in Beverly Hills, you can expect **typical Italian cuisine**, including classics like *pizza and pasta*, and healthy Japanese meals are being made with lots of freshly harvested vegetables, fish and meat.

& Baldi Menu



Primi

TORTELLI OF BUTTERNUT SQUASH \$16.0

Extras

TOASTED CIABATTA \$14.0

Pizze

SAPORE DI TARTUFO \$20.0

Starters & Salads

RISOTTO \$23.0

Pizza - Klein Ø 20cm

CONTADINA \$14.0

Piadina - dünnes italienisches Fladenbrot

PROSCIUTTO CRUDO \$11.0

Pizza

TRICOLORE \$11.0

Dessert

PANNA COTTA \$12.0

Maccheroni

ARRABBIATA \$12.0

Antipasti e Insalate

PROSCIUTTO E BURRATA \$15.0

Formaggi - Käse

PARMIGIANO REGGIANO \$10.0

Calzone

PANZEROTTI \$18.0

Putenschnitzel

TREVISO \$14.0

La Carne-Fleischgerichte

TAGLIATA DI MANZO \$38.0

Carni in Padella “ Fleischgerichte aus der Pfanne

SALTIMBOCCA \$24.0

Pizza mittel Ø 28cm

MISTO \$19.0

Schnitzel - Klein

SPECK \$10.0

Cold

RED ENDIVE \$12.0

Le Bianche

FELINO \$10.0

Pasta & Grains

SWEET CORN AGNOLOTTI \$19.0

E Baldi Menu

Pasta & Entrees

RIGATONCINI \$15.0

Pasta - Plain

POTATO GNOCCHI \$22.0

Secondi Piatti - Dalla griglia

NODINO DI VITELLO \$35.0

DEGUSTAZIONE IN TEGLIA

CRUDA \$15.0

Salads

CAPRESE \$12.0

MIXED SALAD \$10.0

Pizza

MARGHERITA \$12.0

FAVORITA \$14.0

Insalate

SLICED ARTICHOKE \$14.0

SPELT, LANGOSTINE \$19.0

Zuppe & Minestre

COUNTRY BREADCRUMB ANOLINI
HOMEMADE BROTH \$10.0

PASSATO OF BROCCOLI, LEEKS,
TOPPED WITH PORCINI \$12.0

Dolci \$12

CHOICE OF HAZELNUT \$12.0

TARTUFI PROFITTEROL \$12.0

These types of dishes are being served



PENNE \$18.0

ROASTED CHICKEN \$14.0

FOUR CHEESES \$12.0

Formaggi

GOAT CHEESE CAPRINO \$10.0

PECORINO FOGLIE DI NOCI
ROMAGNA \$10.0

GORGONZOLA DOLCE D.O.P.
CISERA \$10.0

MISTO OF CHEESES \$20.0

Pasta

RUCOLA PARMIGIANO \$11.0

NAPOLETANA \$12.0

PASTA E FAGIOLI \$12.0

LASAGNA VERDE \$18.0

FUSILLI \$16.0

Dolci

HOMEMADE STRAWBERRY-
RASBERRY SORBETTO \$12.0

TORTINO AL CIOCCOLATO \$12.0

EDO'S FAVORITE CHOCOLATE
MOUSSE \$12.0

WARM CHOCOLATE CREPES \$12.0

BUTTERSCOTCH RUM PUDDING,
SALTED CARAMEL \$12.0

Secondi

POACHED ORATA \$27.0

GRILLED MEDITERRANEAN
LANGOSTINE \$38.0



E Baldi Menu



PAN FRIED DOVER SOLE AL
LIMONE \$38.0

BRANZINO ALLA GRIGLIA O AL
FORNO \$27.0

GRILLED LARGE EYE
SWORDFISH, LIVORNESE SAUCE \$28.0

GRILLED BEEF FILETTO ON THE
BONE \$38.0

BREADED LAMB CHOPS ALLA
MILANESE \$37.0

VEAL CUTLET ALLA PIZZAIOLA \$27.0

GRILLED T-BONE BISTECCA \$40.0

Antipasti

PROSCIUTTO E BUFALA \$15.0

POLPETTINE OF CRAB \$12.0



SEARED TUNA
TAGLIATINA \$17.0

CHIVE CREPE,
SMOKED SALMON
AND DILL \$12.0

BURRATA \$12.0

FRIED SHITAKE MUSHROOMS,
PECORINO TARTUFATO \$12.0

BRESAOLA \$14.0

SAUTÉED MUSSELS ALLA
VIAREGGINA \$12.0

BEEF MEAT BALLS, FRESH
POMODORO SAUCE \$12.0

BABY CALAMARETTI FRITTI,
MARINARA \$12.0

CROSTINO OF POLENTA \$14.0

E Baldi Menu



E Baldi

365 N Canon Dr, CA 90210-4704,
United States, Beverly Hills

Opening Hours:

Made with menulist.menu

