



Mary's At Baldwin Creek Menu

<https://menulist.menu>
1868 North Route 116VT 05443, Bristol, United States
(+1)8024532432 - <http://baldwincreek.net/>



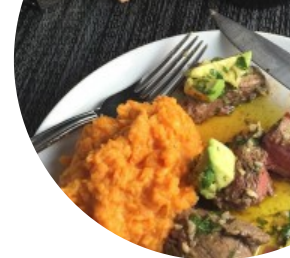
The [menu of Mary's At Baldwin Creek](#) from Bristol includes 77 dishes. On average, dishes or drinks on the menu cost about \$28.2. The categories can be viewed on the menu below. What [User](#) likes about Mary's At Baldwin Creek:

Excellent food, service and atmosphere. The staff were very friendly and gave great recommendations. The food was exceptionally delicious! We were told to try the cream of garlic soup by multiple people, it did not disappoint.

They're gnocchi was delicious! Looking forward to going back again! [read more](#). What [User](#) doesn't like about Mary's At Baldwin Creek:

Very nice place and nice people. Food was VERY good but not Oh my GOD this is AMAZING! good. Went on Valentines day with their prix fixe menu. Understand it's a special event, and wasn't looking for a value meal, but the prices were near about double normal and the 5 course meal, while very good and not skimpy, wasn't enough to make us walk away feeling totally full. Looking forward to trying their regular menu. [read more](#). Mary's At Baldwin Creek from Bristol is famous for its **exquisite burgers**, to which **aromatic fries**, **salads and other sides** are offered, They also present scrumptious South American dishes to you on the menu. Furthermore, you'll find fine American dishes, like for instance burgers and grilled meat on the menu, You can also unwind at the bar with a freshly tapped beer or other alcoholic and non-alcoholic drinks.

Mary's At Baldwin Creek Menu



Alcoholic Drinks

BEER

Appetizers

MAINE CRAB CAKES \$14.0

Süße Desserts

CREPES

Primi

LOBSTER PASTA \$63.0

Gnocchi

GNOCCHI

Snacks

DUMBLEDORE

Sweets

CHOCOLATE CAKE

Steaks

STEAK FRITES \$56.0

Main

SUSAN STORM

Meat Dishes

BEEF TENDERLOIN \$65.0

White wine

VILLA WOLF ROSE \$28.0

Aperitif

GLASS OF CHAMPAGNE

Champagne

PERRIER JOUET BRUT \$48.0

Breakfast Menu

BUTTERMILK PANCAKES

Coffee

ESPRESSO

Red Wine

CHATEAU ST JEAN MERLOT \$28.0

Entree

LEMON RISOTTO \$48.0

Sopas, Ensaladas, y Tortillas

CREAM OF GARLIC SOUP

Sparkling

ALBONE LAMBRUSCO \$34.0

Handhelds

FANCY GRILLED CHEESE \$15.3

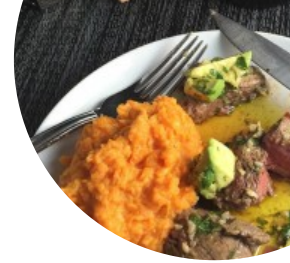
Sauvignon Blanc

WATERKLOOF CIRCUMSTANCE SAUVIGNON BLANC \$28.0

Condiments

SYRUP

Mary's At Baldwin Creek Menu



Wines by the Glass

THREE SAINTS PINOT NOIR \$22.0

Draft List

SANTA JULIA BRUT ROSE \$28.0

Land

TOFU AND VEGETABLES \$22.5

Drinks

DRINKS

French Vanilla Ice Cream Creations

COCONUT CREAM PIE

Fall Dessert Menu

ORANGE OLIVE OIL CAKE \$7.5

Apple Valley Specialty Beverages

PANDEMIC PUNCH

Panini Of The World

ROMAN HOLIDAY

Soups & Small Plates

CURRIED PUMPKIN SOUP

Drawn from Bottles

ARGYLE PINOT NOIR \$34.0

Cocktails (Canned)

WILDEST DREAM

Uncategorized

WONDER WOMAN

Burgers

BEEF BURGER \$16.8

BEAN BURGER \$15.3

Main Course

ROAST DUCK \$31.8

PORK BELLY \$11.5

Small Plates

BROCCOLI FRITTO

MEXICAN STREET CORN

Dinners for Two

PEPOSA \$58.0

DOUG'S FISH FRY \$48.0

Salads



HOUSE SALAD

HOUSE SALAD

KALE CAESAR! \$8.8

Dessert

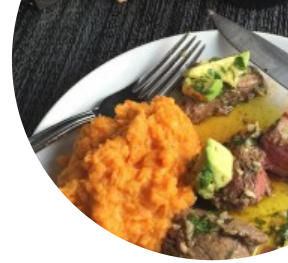
APPLE CRUMB PIE \$8.5

BROOKLYN BLACKOUT CAKE \$8.3

LU.LU ICE CREAM

LULU ICE CREAM OR SORBET

Mary's At Baldwin Creek Menu



Red

CESANESE, ITALIAN RED	\$28.0
BIG BELLA RED, OUR HOUSE RED	\$28.0
LA GOUTANCHE RED BLEND (GRENACHE SYRAH)	\$22.0
MT VEEDER CABERNET SAUVIGNON	\$34.0

White

GRAYWAECKE SAUVIGNON BLANC	\$34.0
LONG STORY SHORT CHARDONNAY	\$22.0
FALSE BAY CHENIN BLANC	\$22.0
FARMHOUSE CHARDONNAY, OUR HOUSE WINE	\$28.0

Beer (Can)

SWITCHBACK KARSTAN LAGER	\$5.0
LAWSON'S DOUBLE SUNSHINE ABV 8	
LAWSON'S SIP OF SUNSHINE IPA, ABV 8	
LAWSON'S SUPER SESSION #6	\$5.0

Restaurant Category



DESSERT
VEGAN
COCKTAIL

GLUTEN FREE

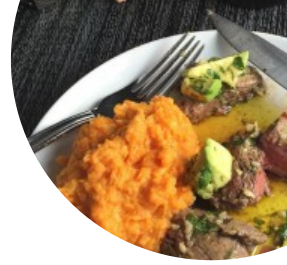
These types of dishes are being served

MUSSELS
BURGER
SALAD
SOUP

Dishes are prepared with

CHOCOLATE
DUCK
SALMON \$28.0
BEEF
GARLIC

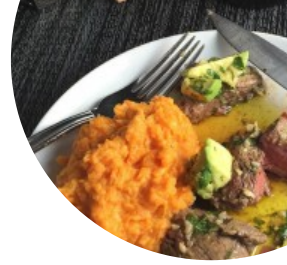
Mary's At Baldwin Creek Menu



FOUR GRACES PINOT GRIGIO \$34.0
IAPETUS TECTONIC \$28.0

DROUHIN, CHABLIS PREMIER CRU \$34.0

Mary's At Baldwin Creek Menu



Mary's At Baldwin Creek

1868 North Route 116VT 05443,
Bristol, United States

Opening Hours:
Friday 17:00-20:30
Saturday 17:00-20:30
Sunday 17:00-20:30

Made with menulist.menu

