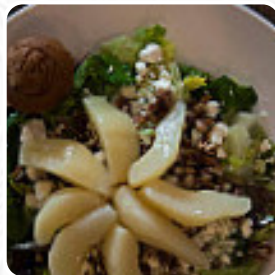




## ***The Grill At Quarterfield Station Menu***

<https://menulist.menu>

Station7704 D Quarterfield RdMD 21061, Glen Burnie, United States  
(+1)4107666446 - <https://www.thegrillatquarterfieldstation.com/>



[The Card](#) of The Grill At Quarterfield Station from [Glen Burnie](#) includes about **218** different meals and drinks. On average, you pay for a dish / drink about \$8.1. What [User](#) likes about The Grill At Quarterfield Station: Great service and a very good lunch. We had the chicken Caesar salad and the Reuben. Both were excellent. It was busy, but the service was great and not at all rushed. [read more](#). The restaurant is accessible and can therefore also be used with a wheelchair or physical disabilities, Depending on the weather conditions, you can also sit outside and eat and drink. For those who want to have a drink after work and sit with friends or alone, The Grill At Quarterfield Station from Glen Burnie is a good bar, They also present nice South American menus to you on the menu. Furthermore, you can order fresh *grilled grill goods*, In the morning they serve a **varied breakfast** here.

# The Grill At Quarterfield Station Menu



## Soups

SOUP OF THE DAY

## Süße Desserts

CREPES

## Eggs & Pancakes

OMELETTE

## Sandwiches & Hot Paninis

BURRITO

## Salad

CAESAR SALAD

## Süßes

MUFFINS \$1.5

## Fish dishes

FISH AND CHIPS \$16.0

## Starters & Salads

FRENCH FRIES \$3.0

## Side Orders

SCRAPPLE \$3.5

## Tacos

BEER BATTERED FISH \$10.0

## Specialties

FIRECRACKER SHRIMP \$11.0

## Chicken dishes

CHICKEN TENDERS \$5.0

## Dessert

PANCAKE \$4.0

## Steaks

COUNTRY FRIED STEAK \$11.0

## Sweet Bites

CINNAMON BUN \$3.5

## Saucen, Chutneys & Extras

GRAVY

## Main

BAGEL SANDWICH \$9.0

## Soft Drinks

BARQ'S ROOT BEER

## Kids Menü

KID'S PIZZA \$4.5

## Mittagskarte: M1-D1€ bis 15:00 Uhr

QUICK LUNCH \$9.0

## Pizza - World Ø 26cm

GEORGIA \$3.0

# The Grill At Quarterfield Station Menu



## Beilagen und Saucen

FRENCH DIP \$12.0

## Alkoholische Cocktails

COSMOPOLITAN \$8.0

## Pop Tarts

BLUEBERRY \$1.0

## Toppings

CANADIAN BACON \$3.0

## Happy Hour - Classic Cocktails

BLOODY MARY \$8.0

## Kids' Menu

KID'S PASTA \$5.0

## Side Stars

HOT DOG \$4.0

## Häagen Dazs - 500 ml

BELGIAN \$7.0

## Brunch

STEAK AND EGGS \$14.0

## Meals

TURKEY CLUB \$10.5

## Egg Dishes

GARDEN SCRAMBLE \$9.0

## Sweets & Desserts

FRUIT CUP \$3.0

## Breakfast Menu

BREAKFAST POTATOES \$3.0

## Soups and Salads

TURKEY CLUB SALAD \$12.0

## Egg Specials

COUNTRY BENEDICT \$9.5

## Breakfast Sides

MAPLE LINK SAUSAGE \$3.0

## Breakfast Combos

BREAKFAST BURRITO \$10.0

## Juice

TOMATO, APPLE, GRAPEFRUIT,  
CRANBERRY

## Coffee and Tea

HAZELNUT COFFEE \$2.0

## lunch menu

HERB SALMON \$9.0

## Brunch Entrees

MINI BELGIAN WAFFLES \$4.3

# The Grill At Quarterfield Station Menu



## Handhelds

SHRIMP SALAD WRAP \$11.0

## Pinot Grigio

EMERALD BAY

## Breakfast Specials

CROISSANT SANDWICH \$8.0

## House Wine

STEEPLE JACK

## Lunch Entrées

ALMOND CRUSTED SALMON \$8.0

## Entrees and Sides

GARLIC MASHED POTATOES

## Crafted Cocktails

GEORGIA PEACH MARTINI \$8.0

## Mexican Breakfast

CHORIZO AND EGGS \$11.0

## Club 55 Breakfast

FLORENTINE SCRAMBLE \$9.0

## Breakfast Plates

HUEVOS RANCHEROS \$9.0

## Freshly Made Sides

SEASONED RICE \$2.5

## Egg-Stratordinary Combinations for Breakfast

EGG SPECIAL \$6.0

## Hot Drink

HOT CHOCOLATE \$2.0

## Breakfast Side Orders

GRITS \$2.0

## Coffee

COFFEE \$2.0

## From the Heart

CRAB CAKES \$25.0

## Accessories

BAGEL CREAM CHEESE \$3.0

## Today's Specials

GRILLED PORKCHOP \$20.0

## Burgers and Sammies

THE GRILL BURGER \$12.0

## housemade pastas

CHESAPEAKE PASTA \$19.5

## PoorBoy's Omelets

KITCHEN SINK \$11.0

# The Grill At Quarterfield Station Menu



## Full Throttle

GRILLED SIRLOIN \$7.0

## Our Martinis

APPLETINI \$8.0

## Classic & New Sides

CREAMED OR SAUTÉED SPINACH \$4.0

## Tableside Service

BANANAS FOSTER \$2.5

## G.O.A.T. Pizza (Greatest of All Time)

CREATE YOUR OWN! \$10.0

## Salad Selection

SALAD TRIO \$10.0

## Breakfast Toppers

RED, WHITE AND BLUE \$2.0

## Market Fresh Sandwiches

REUBEN

## Beer Bottle

HEAVY SEAS \$5.0

## Morton's Lunch Specialties

SHRIMP SALAD TRIO \$11.5

...

CHICKEN TACO SALAD \$13.5

## Ruby Tuesday Pantry

6 OZ. SIRLOIN STEAK \$9.0

## Lunch And Dinner Entrees

CHICKEN AND WAFFLE \$11.0

## First Cup Breakfast

CORNED BEEF HASH AND EGGS \$11.0

## Hungry Man

CREAM CHIPPED BEEF \$7.0

## Fruity Martinis

GRAPEFRUITINI \$8.0

## Jump-Starters

FRIED GREEN TOMATOES

## McKendrick's Signature Coffee Drinks

KEOKI COFFEE \$11.0

## Steaks & Shellfish - Oysters

CHESAPEAKE \$14.5

## Breakfast - Easy & Toasty

THICK TOAST \$1.5



# The Grill At Quarterfield Station Menu



## The Butcher's Collection - Ribs

BEEF SHORTRIBS \$21.0

## Main courses

RIBS

CRAB

## Toast

FRENCH TOAST \$7.0

TOAST

## Wraps

NANTUCKET WRAP \$9.5

CALIFORNIA TURKEY WRAP \$10.0

## Quesadillas

CRAB QUESADILLA \$13.0

BBQ CHICKEN QUESADILLA \$10.5

## Beers

MILLER LITE \$4.0

BLUE MOON \$5.0

## Draft Beers

YUENGLING \$4.0

SAM ADAMS SEASONAL \$5.0

## Salad Toppers

GRILLED OR PEPPERCORN CHICKEN \$5.0

GRILLED OR BLACKENED AHI TUNA \$8.0

## Standbys

EGGS WITH MEAT AND PANCAKE \$9.5

THE GRILL SKILLET \$10.5

## Sandwiches & Grill Favorites

CHICKEN FAJITA CAESAR WRAP \$10.5

CHICKEN CUBANO \$11.5

## Restaurant Category

AMERICAN

FRENCH

## Uncategorized

BANANA CHOCOLATE CHIP \$1.5

SIRLOIN SALAD \$14.0

## Non alcoholic drinks



ICED TEA \$2.3

GINGER ALE

SPRITE

## Burgers

ALL AMERICAN BURGER \$11.0

THREE CHEESE BURGER \$12.0

CHEESE BURGER \$5.0

## Breakfast

BUTTERMILK PANCAKE \$3.0

PROTEIN SCRAMBLE \$9.0

FRESH FRUIT CUP \$3.5

# The Grill At Quarterfield Station Menu



## Soft drinks

DIET COKE  
LEMONADE  
COCA-COLA

## Beer

SNAKE DOG IPA \$5.0  
FLYING DOG SEASONAL \$5.0  
COORS LIGHT \$4.0

## Omelettes

RANCHERO OMELETTE \$10.0  
CRAB AND CHEESE \$12.0  
CHEESE OMELETTE

## Hot drinks

HOT TEA \$1.8  
HERBAL TEA \$2.0  
TEA

## Healthy Choices

FRUIT BOWL\* \$5.0  
OATMEAL\* \$4.5  
GRANOLA\* \$6.0

## Martinis



QUARTERFIELD MARTINI \$8.0  
LEMON DROP MARTINI \$8.0  
CLASSIC DIRTY MARTINI \$8.0

## Beverages

SPICED ICED TEA \$2.5  
SWEET TEA \$2.5  
FRESH SQUEEZED OJ  
RASPBERRY LEMONADE \$2.5

## Fresh Baked

BAGEL WITH CREAM CHEESE (PLAIN OR WHOLE WHEAT) \$3.5  
ONE BUTTERMILK BISCUIT \$1.0  
TWO BUTTERMILK BISCUITS \$1.8  
SMALL PUMPKIN MUFFIN \$0.8

## Salad Bases

QUARTERFIELD SALAD BASE \$8.0  
QUARTERFIELD SPINACH SALAD BASE \$8.0  
CAESAR SALAD BASE \$7.0  
GARDEN SALAD BASE \$7.0

## Appetizers



MARYLAND VEGETABLE CRAB SOUP  
VEGETARIAN THREE BEAN CHILI

QUARTERFIELD NACHOS \$10.0  
BBQ STUFFED JALAPEÑOS \$9.0  
CRAB CAKE \$15.0

## Sandwiches

GRILLED REUBEN \$11.0  
MAHI REUBEN \$14.0  
CRISPY CHICKEN CLUB \$11.5  
GRILLED TENDERLOIN \$22.0

# The Grill At Quarterfield Station Menu



GRILLED CHEESE SANDWICH \$4.0

## White wine

MONTEVINA PINOT GRIGIO (IT)

ANGELINI PINOT GRIGIO (IT)

LEONARD KREUSCH MOSEL RIESLING (GER)

RAYMOND VINEYARDS SAUVIGNON BLANC (CA)

KENDALL JACKSON CHARDONNAY (CA)

## Red Wine

ANGELINI PINOT NOIR (IT)

DELOACH VINEYARDS MERLOT (CA)

ANGELINI SANGIOVESE (IT)

OZV LODI ZINFANDEL (CA)

SIVAS-SONOMA CABERNET (CA)

*These types of dishes are being served*



PANCAKES \$6.0

MEATLOAF \$14.5

ROASTED CHICKEN \$18.0

SALAD

APPETIZER

SOUP

STEAK

TOSTADAS

## Starters



CLASSIC WESTERN \$10.0

CHORIZO SAUSAGE \$3.5

CRAB DIP \$13.0

SMOTHERED FRIES \$6.5

CLASSIC MEATLOAF \$10.0

SESAME CHICKEN \$6.0

BLACKENED SHRIMP \$5.5

CITRUS TUNA \$19.0

HERB CRUSTED SALMON \$19.5

MAHI CREOLE \$22.0

## Salads



GREEK GODDESS \$11.0

QUARTERFIELD SALAD \$13.0

SESAME CHICKEN SPINACH SALAD \$13.5

TUNA NICOISE SALAD \$15.0

CHICKEN FAJITA CAESAR \$13.5

CRAISIN CHICKEN SALAD \$11.0

GRILLED CHICKEN CAESAR \$12.0

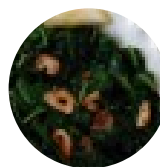
SHRIMP SPINACH SALAD \$13.5

BUFFALO CHICKEN SALAD \$12.5

CAESAR SALAD

TACOS

## Side dishes



SAUTEED SPINACH \$11.0

ENGLISH MUFFIN \$1.5

TURKEY SAUSAGE \$3.5

HICKORY SMOKED BACON \$3.0

MASHED POTATOES \$2.5

GRILLED ASPARAGUS \$3.3

SAUTEED VEGETABLES \$2.8

ONION RINGS \$3.5

SIDE GARDEN SALAD \$3.5



# The Grill At Quarterfield Station Menu



SIDE QUARTERFIELD SALAD \$4.5  
CREAMED SPINACH

TOMATOES  
BEEF  
POTATOES

*Dishes are prepared with*



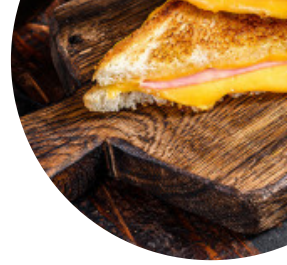
CORNED BEEF HASH \$4.0  
GREEN BEANS \$3.0  
EGGS \$4.0

GARLIC  
ONION  
SPINAT  
CHEESE  
PESTO

CHICKEN

CHOCOLATE

# *The Grill At Quarterfield Station Menu*



## *The Grill At Quarterfield Station*

Station 7704 D Quarterfield  
Rd MD 21061, Glen Burnie,  
United States

### **Opening Hours:**

Monday 08:00-11:00 11:00-16:00 16:00-20:00

Tuesday 08:00-11:00 11:00-16:00  
16:00-20:00

Wednesday 08:00-11:00 11:00-16:00  
16:00-20:00

Thursday 08:00-11:00 11:00-16:00  
16:00-20:00

Friday 08:00-11:00 11:00-16:00 16:00-20:00



Saturday 08:00-12:00 12:00-16:00

16:00-20:00

Sunday 08:00-12:00 12:00-16:00 16:00-

20:00

# *The Grit At Quarterfield Station Menu*

made with menu list here

