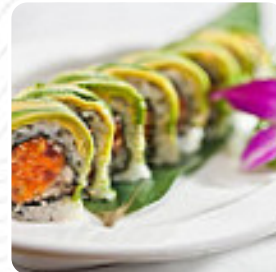
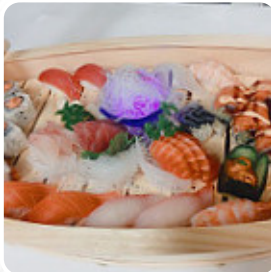




## ***Kotosushi Menu***

<https://menulist.menu>

719 Sansom St 1st Floor PA 19106-3258, Philadelphia, United States  
(+1)2672392250 - <http://www.kotosushipa.com/>



The restaurant from Philadelphia offers 229 different [dishes and drinks on the card](#) at an average \$10.9. What [User](#) likes about Kotosushi:

Quiet [sushi](#) place on Jewelers Row. Nice and quiet on a Monday night. The [sushi](#) was very good and the platter for is really a good deal, definitely enough food for hungry people. We had a very full meal for less than [read more](#). The premises in the restaurant are wheelchair accessible and can also be used with a wheelchair or physical limitations. Kotosushi from Philadelphia prepares for you **fine sushi** (e.g., **Maki and Sashimi**), as well as in numerous additional variations, with fresh ingredients like fish, vegetables and meat, At the bar, you can relax with a freshly tapped beer or other alcoholic and non-alcoholic drinks. A lot of freshly harvested vegetables, fish and meat is used in the **healthy Japanese cuisine** of Kotosushi, You shouldn't miss the opportunity to try the crispy and crunchy [pizza](#), baked fresh in an original manner.

# Kotosushi Menu



## Non alcoholic drinks

BLACK \$2.5

## Alcoholic Drinks

BEER

## Sashimi

SASHIMI DELUXE \$29.0

## Hoso Maki

SALMON AVOCADO ROLL \$6.0

## King California Rolls

DRAGON ROLL \$10.0

## 10 most popular

HARUMAKI \$5.0

## Main courses

SUSHI

## Maki

CHICKEN TEMPURA \$11.0

## Sushi Don

TEKKA DON \$15.0

## Extras

SWEET POTATO

## Side dishes

MIX GREEN SALAD \$4.0

## Starters & Salads

SHRIMP

## Appetizer

TEMPURA \$5.0

## Specialties

TERIYAKI CHICKEN

## Drinks

SAKE

## Insalate

AVOCADO SALAD \$5.0

## Rolls

SPICY SALMON ROLL \$6.0

## Maki Sushi

MANHATTAN ROLL \$13.0

## Inside Out Maki

CHICKEN YAKITORI \$17.0

## Sushi Specials

PHILADELPHIA ROLL \$6.0

## Soup

SEAFOOD SOUP (FOR 2) \$9.0

## Postres

BANANA TEMPURA \$7.0

# Kotosushi Menu



## Inside Out Rolls

TUNA AVOCADO ROLL \$6.0

## Deluxe Rolls

GODZILLA ROLL \$11.0

## Fish

SALMON ROLL \$5.0

## Ice cream\*

VANILLA \$4.5

## Don

UNA DON \$13.0

## Veggies

FRESH GARDEN SALAD \$2.5

## Subs

PHILLY

## Special Roll

ANGEL ROLL \$14.0

## Sonstiges

SASHIMI

## Asian specialties

EDAMAME \$4.0

## Panierte Special Rolls

KING ROLL \$15.0

## Hot und Rocket Style

CRUNCHY ROLL \$11.0

## Fuji Yama Spezialitäten

CATERPILLAR ROLL \$14.0

## Rollen

TUNA CUCUMBER ROLL \$6.0

## Teriyaki

TOFU TERIYAKI \$9.0

## Spezial-Nudeln

UDON

## Uramaki Inside Out

BONSAI ROLL \$12.0

## Water

SODA \$1.5

## Side Order

BROWN RICE \$2.0

## Pizza vegetarisch klein Ø 28cm

JASMINE \$2.5

## Café

TUNA AVOCADO SALAD \$9.5

# Kotosushi Menu



## Raw Rolls

SEX ON THE BEACH ROLL \$13.0

## Tea

GREEN TEA \$4.5

## Seafood Dishes

FRIED CALAMARI \$7.0

## Chef's Specials

KOTO ROLL \$9.5

## 10" Pizza

2 HOT 2 HANDLE \$12.0

## Udon/Soba Noodle

NABEYAKI UDON NOODLE SOUP \$16.0

## Sides and Extras

VEGETABLE ROLL \$4.5

## Soup & Salad

SUMOMONO \$7.0

## Maki combo

VEGGIE MAKI COMBO \$14.0

## Specialty

SALMON TOWER \$8.0

## Sushi Entree

SUSHI SASHIMI COMBO \$16.0

## Chef's Special Roll

SPRING TIME ROLL \$14.0

## Maki & Temaki

SPICY YELLOWTAIL ROLL \$6.5

## Nigiri & Sashimi

YELLOWTAIL (HAMACHI) \$6.0

## Hibachi

HIBACHI STEAK FRIED RICE \$10.0

## Hibachi Fried Rice

HIBACHI SHRIMP FRIED RICE \$9.0

## Sushi Bar Special Entree

SPICY MAKI COMBO \$17.0

## Chef's Special Rolls

WESTERN ROLL \$5.0

## Vegetable Rolls

SHIITAKE MUSHROOM TEMPURA ROLL \$5.0

## Regular Roll

YELLOWTAIL WITH SCALLION ROLL \$6.0

## Deep Fried Special Rolls

AMAZING TUNA ROLL \$13.0

# Kotosushi Menu



## **Sushi Combination**

SUSHI ROLL COMBO \$10.0

## **Sushi Roll or Hand Roll**

SHRIMP TEMPURA ROLL \$7.0

## **NOBU HOT DISHES**

BLACK COD WITH MISO \$13.0

## **Roku Signature Style Sushi / Sashimi**

SHRIMP (EBI) \$4.5

## **LUNCH BOX/11:30am-3:00pm**

CHICKEN TERIYAKI DINNER \$15.0

## **Appetizers - Kitchen**

PAN-SEARED DIVER SCALLOPS \$24.0

## **Japanese Cuisine - Ramen / udon**

SAUTEED YAKI UDON \$13.0

## **Sushi Roll and Hand Roll**

LOBSTER TEMPURA ROLL \$15.0

## **Sushi Bar APPS**

PEPPER TUNA TATAKI \$13.0

## **Gluten-Free Special Sushi Combo**

SASHIMI ROLL COMBO \$13.0

## **Lunch Bento Box (11:00AM-3:00PM)**

TENDER CHICKEN KATSU \$11.0

## **Maki & Hand Rolls**

SWEET POTATO TEMPURA ROLL \$5.0

## **Sushi - Appetizer**

EEL ROLL WITH CUCUMBER \$6.0

## **Maki and Hand Rolls**

SALMON CUCUMBER ROLL \$6.0

## **Our Seafood\***

PAN-ROASTED CHILEAN SEA BASS \$32.0

## **Koto Hawaiian Style Poke**

KOTO HAWAIIAN STYLE POKE

## **Beverage / Desserts**

JAPANESE BOTTLE SODA \$3.5

## **WARM SPECIAL ROLLS**

DUCK ROLL \$9.0

## **Fajitas Duo**

SAUTEED SHRIMP \$18.0

# Kotosushi Menu



## Steel Featured Rolls

TUNA TOWER \$8.0

## Lunch Sushi Special Roll

ANY 2 ROLLS \$8.0

## Cold & Hot Ala Carte

NARUTO MAKI \$15.0

## Japanese Special Dish

CHICKEN TEMPURA DINNER \$15.0

## Lunch Specials - Maki

ANY 3 ROLLS \$11.0

## Vegetarian and Vegan Rolls

PUMPKIN TEMPURA ROLL \$5.0

## Sushimi and Sashimi a La Carte (2 Piece per Order)

FLYING FISH ROE (MASAGO) \$5.0

## Sushi - Nigiri

FRIED TOFU (INARI) \$3.0

## Uncategorized

TEMPURA MAKI COMBO \$19.0

## Salads

SEAWEED SALAD \$5.0

MISTA

## Chicken

CHICKEN KATSU \$17.0

GENERAL TSO'S CHICKEN \$15.0

## Starters

GRILLED CHILEAN SEA BASS \$17.0

HIBACHI CHICKEN \$10.0

## Main Course

GYOZA

SEA BASS

## Classic Sushi Rollen

AVOCADO ROLL \$3.5

OSHINKO ROLL \$4.5

## Japanese specialties

MISO SOUP \$2.0

YAKITORI \$6.0

## Non-alcoholic

VOSS SPARKLING WATER \$7.0

VOSS STILL WATER \$7.0

## Sushi Bar Entree

SUSHI SASHIMI COMBO (FOR 1) \$26.0

SUSHI SASHIMI COMBO (FOR 2) \$53.0

## Sushi Or Sashimi

WHITE TUNA \$5.5

RED CLAM \$5.0

# Kotosushi Menu



## *Sushi / Sashimi A la Carte*

SEA URCHIN (UNI)	\$10.0
OCTOPUS (TAKO)	\$5.5

## *Teriyaki Dinner*

STEAM VEGETABLE FRIED TOFU TERIYAKI DINNER	\$14.0
ANGUS N.Y. STEAK TERIYAKI DINNER	\$18.0

## *Tempura Dinner*

VEGETABLE TEMPURA DINNER	\$13.0
SHRIMP TEMPURA DINNER	\$18.0

## *Raw Special Rolls*

OUT OF CONTROL ROLL	\$9.0
SPICY GIRL ROLL	\$16.0

## *Chef's special Roll*

CRAZY ROLL	\$14.0
PINK LADY ROLL	\$13.0

## *Sushi & Sashimi A la Carte*

BLACK PEPPER TUNA	\$6.0
RED SNAPPER (TAI)	\$5.5

## *Sushi / Sashimi Entree*

AMERICAN DREAM SUSHI	\$24.0
AMERICAN DREAM SASHIMI	\$26.0

## *Restaurant Category*

DESSERT

## VEGETARIAN

### *Soups*

LOBSTER MISO SOUP	\$6.0
CREAMY EDAMAME SOUP	\$4.0
BARLEY	\$2.5

### *Sushi Rolls*

RAINBOW ROLL	\$9.5
CUCUMBER ROLL	\$3.5
SHRIMP DRAGON ROLL	\$13.0

### *Salad*

KANI SALAD	\$5.5
DIRTY SEAWEED SALAD	\$7.0
FLIRT SALAD	\$6.0

### *Sushi*

SPICY TUNA ROLL	\$6.0
CALIFORNIA ROLL	\$4.5
ALASKAN ROLL	\$5.0

### *Nigiri Sushi*

SALMON ROE (IKURA)	\$6.5
TUNA SUSHI	\$18.0
SALMON SUSHI	\$17.0

### *Special Rolls*

BLACK DRAGON ROLL	\$14.0
LOBSTER DYNAMITE ROLL	\$18.0
SWEET HEART ROLL	\$13.0

# Kotosushi Menu



## ***Fried Rice***

HIBACHI VEGETABLE FRIED RICE	\$7.0
HIBACHI CHICKEN FRIED RICE	\$8.0
FRIED RICE	\$3.0

## ***Roll Or Hand Roll***

ASPARAGUS WITH CRABSTICK ROLL	\$4.5
EEL ROLL WITH AVOCADO	\$6.0
SPIDER ROLL (5 PCS)	\$9.0

## ***Lunch Bento Box***

ANGUS N.Y. STEAK TERIYAKI	\$12.0
PAN SAUTEED CURRY CHICKEN	\$10.0
PAN SAUTEED DIVER SCALLOP	\$13.0

## ***Sushi Bar Entrees***

SUSHI REGULAR	\$18.0
SUSHI DELUXE	\$22.0
SASHIMI REGULAR	\$23.0
CHIRASHI	\$13.0

## ***Sushi & Sashimi A La Carte***

SALMON (SAKE)	\$5.5
TUNA (MAGURO)	\$6.0
SQUID (IKA)	\$5.0
EEL (UNAGI)	\$6.0

## ***Koto's Signature Roll***

PINK PUSSY CAT ROLL	\$13.0
DANCING KANI ROLL	\$13.0
LAS VEGES ROLL	\$12.0
DOUBLE T'S ROLL	\$13.0

## ***Teppanyaki Dinner Entree - Traditional***

HIBACHI VEGETABLE	\$8.0
HIBACHI SHRIMP	\$11.0
HIBACHI SCALLOP	\$12.0
HIBACHI SALMON	\$12.0

## ***Dinner Entrées***

SALMON TERIYAKI DINNER	\$18.0
SESAME CHICKEN (OVEN-BAKED)	\$18.0
SEAFOOD TO-BIAN	\$30.0
ASIAN BOUILLABAISSE	\$26.0
A TASTE OF KOTO	\$32.0

## ***Signature Rolls***

ASPARAGUS TEMPURA ROLL	\$5.0
ROCK N ROLL	\$13.0
KING CRAB CRUNCH ROLL	\$13.0
VOLCANO ROLL	\$14.0
FIRE ROLL	\$15.0
MANSFIELD ROLL	\$13.0

## ***Sushi or Sashimi A La Carte***

FLUKE (HIRAME)	\$5.0
MACKEREL (SHIMA SOBA)	\$5.0
JUMBO SWEET SHRIMP (AMA-EBI) (2 PCS)	\$8.5
EGG (GYOKU)	\$4.0
SMOKED SALMON (SMOKING SAKE)	\$6.0
CRABSTICK (KANI KAMA)	\$4.0



# Kotosushi Menu



## Hibachi Dinner

HIBACHI DINNER VEGETABLE (NO SHRIMP)	\$12.0
HIBACHI DINNER CHICKEN	\$17.0
HIBACHI DINNER ANGUS STEAK	\$19.0
HIBACHI DINNER SHRIMP	\$18.0
HIBACHI DINNER SCALLOP	\$19.0
HIBACHI DINNER SALMON	\$18.0
KOTO HIBACHI FOR 2	\$52.0
HIBACHI N.Y. STEAK	\$12.0

## These types of dishes are being served



SALMON TERIYAKI	\$11.0
NOODLES	
SOUP	

LOBSTER

SALAD

FISH

PIZZA

SPICY TUNA

ICE CREAM

APPETIZER

## Appetizers

SUSHI TASTING (5 PCS)	\$9.0
SASHIMI TASTING (9 PCS)	\$11.0



SPICY TUNA PIZZA	\$12.0
OCTOPUS DELIGHT	\$9.0
SHUMAI	\$5.0
AGE DASHI TOFU	\$6.0
SPICY BAKED NEW ZEALAND MUSSELS	\$7.0
BIG BALL	\$12.0
CRISP SOFT SHELL CRAB	\$10.0
LOBSTER BUNS	\$12.0
SAKURA LOVER	\$9.0

## Dishes are prepared with



CHICKEN TERIYAKI	\$10.0
VEGETABLE	\$5.0
CHOCOLATE	\$4.5
COCONUT	\$4.5
MANGO	\$6.0
STRAWBERRY	\$6.0
MELON	\$6.0
MISO	
WE HAVE	
TOFU	
CHICKEN	
POTATOES	
MUSHROOMS	
TERIYAKI	

# ***Kotosushi Menu***



## ***Kotosushi***

719 Sansom St 1st FloorPA  
19106-3258, Philadelphia, United  
States

**Opening Hours:**  
Monday 11:00-21:00  
Tuesday 11:00-21:00  
Wednesday 11:00-21:00  
Thursday 11:00-21:00  
Friday 11:00-21:30  
Saturday 15:30-21:30  
Sunday 15:30-21:00

Made with [menulist.menu](https://menulist.menu)

