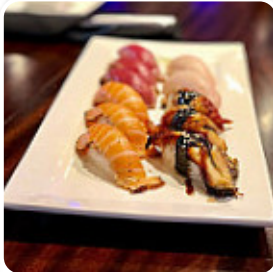




Bloofin Sushi Menu

<https://menulist.menu>

6615 N Grand Pkwy WTX 77389, Spring, United States
(+1)2816512573 - <http://www.bloofinsushi.com/>



The Card of Bloofin Sushi from Spring includes about **376** different menus and drinks. On average, you pay for a dish / drink about \$10.1. What [User](#) likes about Bloofin Sushi:

Super fresh and in places creative spot with wonderful waitresses and a few killer yummy options. Beer and sake not best but you are there for the fish. Presented clean and fully. Just go. [read more](#). What [User](#) doesn't like about Bloofin Sushi:

Sushi/Sashimi is awesome.. fresh.. seems like they keep their product rotated. Great flavors.. adult beverages are unique and have great selection. Not nearly the price of Uchi's , but pretty good overall.. and quality is somewhat comparable.. without the drive.. very please for this place to be within 15 minutes of the house. [read more](#). If you want to try tasty American courses like burgers or barbecue, Bloofin Sushi from [Spring](#) is the place to be, They also present scrumptious South American meals to you on the menu. In addition, they provide you **tasty seafood dishes**, Especially delicious are also the Maki and delicacies like *Te-Maki* from this place.

Bloofin Sushi Menu



Salads

SEAWEED SALAD \$4.0

Smoothies

TROPICAL PASSION \$12.0

Sushi Rolls

BLUSHING GEISHA \$12.0

10 most popular

CRAZY SALMON \$13.0

Pizza

TEXAS

Burgers

TRUFFLE \$16.0

Extras

IKA SANSAI \$5.0

Pizza - medium á 30cm

GREEN GARDEN \$11.0

Sandwiches

CALIFORNIA SANDWICH

Rice

SMALL FRIED RICE \$3.0

Starters & Salads

SHRIMP

Baguettes

COSMO \$12.0

Drinks

SAKE

Rolls

LION KING \$16.0

Fingerfood

CALAMARES

Gunkan Sushi

HOT SAKE \$5.0

Rice Dishes

EGG FRIED RICE \$8.0

Sushi Sashimi

KING CRAB SASHIMI \$18.0

Fried rice

COMBINATION FRIED RICE \$13.0

vegetarian Sushi

INARI SUSHI \$2.0

Ice cream*

RED BEAN ICE CREAM \$3.0

Don

SAKE IKURA DON \$25.0

Bloofin Sushi Menu



Makimono

ZERO SEN \$13.0

Main

JALAPENO ROLL \$9.0

Futomaki (große Rolle)

TORO SPECIAL \$18.0

Lunch Specials

BLUEFIN TUNA SASHIMI \$10.0

White wine

KUNG FU GIRL RIESLING \$8.0

Amerikanische Pizza

GOLDEN GATE \$13.0

Sashimi & Tataki

HAMACHI SASHIMI \$8.0

Sonstiges

SASHIMI

Fuji Yama Spezialitäten

CATERPILLAR ROLL \$13.0

Speziell paniertes Sushi

ALASKA ROLL \$13.0

Kim Rolls

GEISHA \$15.0

Roll Sushi

RAINBOW ROLL (8) \$12.0

Sushi Kombi

EBI SUSHI \$2.5

Pizza á 26 cm

TUNA PIZZA \$11.0

Inside Out Maki Rolls - vegetarisch

CAVIAR ROLL \$13.0

Tea

HOT GREEN TEA \$3.0

Seafood Dishes

FRIED CALAMARI \$8.0

Beverage

PINEAPPLE JUCIE \$2.5

Rice & Noodle

KON KANPACHI \$15.0

Japanese salads

PEPPER TUNA SALAD \$11.0

Combination

SUSHI A \$21.0

Bloofin Sushi Menu



Soup and Salad

ASARI MISO SOUP \$6.0

Alcoholic Beverages

KIM CRAWFORD SAUVIGNON BLANC \$10.0

Cooked Roll

GOLDEN GATE ROLL \$13.0

Popular Items

CRUNCH ROLL (8) \$12.0

Red

BENZIGER MERLOT \$8.0

Something Sweet

MANGO MOCHI \$5.0

Specialty

DOS EQUIS \$4.0

Bottles

KIRIN LIGHT \$4.0

Sparkling

CAPOSALDO MOSCATO \$7.0

Appetizer From Kitchen

HAMACHI KAMA \$18.0

Sushi Bar Entrees

CHIRASHI \$26.0

Raw

SCALLOP SASHIMI \$9.0

Featured Item

RAINBOW SPIDER \$16.0

Nigiri/ Sashimi

ALBACORE SUSHI \$2.5

Sushi a La Carte

HIRAME SUSHI \$4.0

The Sparkling

CUPCAKE PROSECCO \$8.0

Drink Specials

HOUSE CABERNET SAUVIGNON \$6.0

Martini

APPLE-TINI \$12.0

Izakaya

HAMA CHILI \$12.0

Carafes

TY KU BLACK \$22.0

Local

SHINER BOCK \$4.0

Long

BLUE HAWAIIAN \$12.0

Bloofin Sushi Menu



Meal for Two

DELUXE PLATTER \$45.0

Sushi 2pcs

SNOW CRAB SUSHI \$3.0

Sushi

UNAGI (EEL) SUSHI \$2.5

Premium Cold Sake

SHO CHIKU BAI GINJO \$12.0

Sashimi (3 Pieces)

SNOW CRAB SASHIMI \$8.0

Classic Rolls or Hand Rolls

CRAZY ROLL (6) \$10.0

Ofertas Sushi

HAMACHI SUSHI \$3.0

Sushi & Voogerchten

SUSHI B \$32.0

Makimono! (4 Pieces)

DRAGON ROLL (8) \$13.0

Skillet

ANGUS BEEF \$18.0

Chef's special Roll

PINK LADY ROLL \$16.0

Vegetarian: Rice & Noodles

VEGETABLE FRIED RICE \$9.0

Bottled Sake

HANA FUJI APPLE \$12.0

Featured Sake

SHO CHIKU BAI NIGORI \$10.0

Bricco Signature Cocktails

LEMON DROP \$12.0

White - Rose - Sparkling

KENDALL JACKSON
CHARDONNAY \$10.0

Wine A Little, it will Do you Good

LA CREMA PINOT NOIR \$10.0

Beverage and Side Orders

SOFT DRINK \$2.5

Maki Roll - Chef Special Roll

NARUTO \$16.0

Wine!

HOUSE MERLOT \$6.0

Brains

MONKEY BRAIN \$8.0

Bloofin Sushi Menu



Rice Creams \$4

STRAWBERRY MOCHI \$5.0

Main courses

SUSHI

CALAMARI

Sushi Don

TEKKA DON \$25.0

UNAGI DON \$20.0

Side dishes

SPICY CUCUMBER SALAD \$7.0

STEAMED RICE \$2.0

Soft drinks

APPLE JUICE \$2.5

ORANGE JUICE \$2.5

Spirits

MARTINI \$12.0

AMERICANO

Ramen

SPICY MISO RAMEN \$13.0

VEGETABLE RAMEN \$11.0

Main Course

GYOZA \$6.0

SEA BASS

Soup

DOBIN MUSHI \$10.0

TONKOTSU RAMEN \$13.0

Japanese specialties

MISO SOUP \$3.0

BENTO BOX \$15.0

Sashimi/Donmonos

SUZUKI SASHIMI \$8.0

TAI SASHIMI \$6.0

Fried Rice

FRIED RICE CHICKEN \$11.0

FRIED RICE

Gunkan Sushi - 1 Stück

IKURA SUSHI \$2.5

MASAGO SUSHI \$2.5

Beverages

ARNOLD PALMER \$3.0

SHIRLEY TEMPLE \$3.0

Noodle And Rice

FRIED RICE BEEF \$11.0

FRIED RICE SHRIMP \$11.0

Sashimi - 3 buc (80 gr)

O-TORO SASHIMI \$26.0

TAMAGO SASHIMI \$5.0

Bloofin Sushi Menu



Soup & Salad

GINGER DRESSING HOUSE SALAD	\$3.0
MISO DRESSING HOUSE SALAD	\$3.0

Wines by the Glass

14 HANDS MERLOT	\$8.0
MEIOMI PINOT NOIR	\$10.0

Zensai | Appetizer

FOIE GRAS CHAWANMUSHI	\$10.0
UNI CHAWANMUSHI	\$10.0

These types of dishes are being served

FISH
ICE CREAM

Alcoholic Drinks

CHOYA PLUM	\$8.0
TSING TAO	\$4.0
BEER	

Beer

BUD LIGHT	\$3.0
LUCKY BUDDHA	\$5.0
SAPPORO BLACK	\$6.0

Signature Rolls

RED MOON ROLL	\$12.0
SKY DIVER (8)	\$15.0
VOLCANO ROLL	\$14.0

Asiatische Getränke

ASAHI	\$4.0
KIRIN	\$4.0
SAPPORO	\$4.0

Non alcoholic drinks

ICED TEA	\$2.5
RAMUNE	\$3.5
BOTTLED WATER	\$3.5
SPARKLING WATER	\$3.5

Appetizers

AGEDASHI TOFU	\$6.0
BAKED MUSSELS	\$8.0
STEAMED EDAMAME	\$5.0
KANPACHI SASHIMI	\$9.0

Nigiri Sushi - 2 Stück

KANIKAMA SUSHI	\$2.0
SAKE SUSHI	\$2.5
SUZUKI SUSHI	\$3.0
TAMAGO SUSHI	\$2.0

Signature Maki

AMAZING TUNA	\$15.0
ENDO	\$15.0
ROBUSUTA	\$18.0
SUPER CATERPILLAR	\$14.0

Sushi & Sashimi Plate

BLOOFIN SPECIAL	\$20.0
SASHIMI A	\$21.0

Bloofin Sushi Menu



SASHIMI B	\$28.0
SASHIMI C	\$45.0

A la Carte & Bento

CHILEAN SEA BASS YUAN	\$21.0
GRILLED MISO COD	\$18.0
SPICY GARLIC FREE RANCH CK	\$15.0
WAGYU BEEF ISHIYAKI	\$25.0

Appetizer

SHRIMP SHUMAI	\$7.0
EDAMAME SPICY	\$5.0
SAKE MUSSELS	\$12.0
PORK WASABI SHUMAI	\$6.0
ESCOLAR SASHIMI	\$8.0
CHU TORO SASHIMI	\$18.0

Cold Appetizer

BLOOFINVICHE	\$12.0
EASTERN TRUFFLE SALMON	\$12.0
ESCOLAR CARPACCIO	\$10.0
TUNA AND GOAT CHEESE SASHIMI	\$11.0
WAGYU BEEF TATAKI	\$12.0
UNI KING CRAB SPOON	\$8.0

Hot Appetizer

EDAMAME NON SPICY	\$5.0
SHRIMP TEMPURA (AP)	\$6.0
VEGETABLES TEMPURA (AP)	\$6.0
SOFT SHELL CRAB TEMPURA (AP)	\$11.0
LOBSTER TEMPURA (AP)	\$26.0
WAGYU BEEF SKEWER	\$15.0

Dishes are prepared with

AVOCADO	\$2.0
MILK	\$2.5
DUCK	
TRAVEL	
SEAFOOD	
YELLOWTAIL	

Lunch

NI COMBO	\$11.0
SAN COMBO	\$15.0
5 SUSHI ROLL	\$13.0
6 SASHIME ROLL	\$13.0
7 SUSHI ROLL	\$16.0
LUNCH CHIRASHI	\$16.0
LUNCH UNAGI DON	\$13.0
SUSHI SUMO	\$18.0

Beers

MICHELOB ULTRA	\$3.0
MILLER LITE	\$3.0
ST ARNOLD ART CAR IPA CRAFT BEER	\$6.5
KARBACH LOVE STREET CRAFT BEER	\$5.0
ST ARNOLD OKTOBERFEST CRAFT BEER	\$6.5
KYOTO WHITE YUZU ALE JAPANESE CRAFT BEER	\$7.0
KYOTO YAMADANISHIKI ALE JAPANESE CRAFT BEER	\$7.0
KYOTO KUROMAME ALE JAPANESE CRAFT BEER	\$7.0

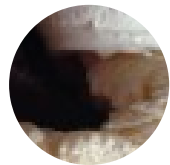
Bloofin Sushi Menu



Red Wines

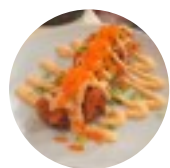
ESTANCIA CABERNET SAUVIGNON	\$8.0
JOEL GOTT CABERNET SAUVIGNON	\$11.0
DE NOVO CABERNET SAUVIGNON	\$65.0
THE DREAMING TREE RED BLEND	\$8.0
INTRINSIC RED BLEND	\$15.0
THE SEEKER MALBEC	\$7.0
RENACER EL PUNTO FINAL MALBEC	\$8.0
PREDATOR ZINFINDEL	\$8.0

Dessert



RED BEAN MOCHI	\$5.0
GREEN TEA MOCHI	\$5.0
VANILLA ICE CREAM	\$3.0
GREEN TEA ICE CREAM	\$3.0
LYCHEE ICE CREAM	\$5.0
GREEN TEA CRÈME BRULEE	\$7.0
BLACK SESAME CRÈME BRÛLÉE	\$7.0
STRAWBERRY CHEESECAKE	\$8.0
MANGO CHEESECAKE	\$8.0
YUZU CHEESECAKE	\$8.0

Nigiri Sushi



AMAEBI SUSHI	\$7.0
ESCOLAR SUSHI	\$2.5
IKA SUSHI	\$2.5
SABA SUSHI	\$3.0
SCALLOP SUSHI	\$3.0
SMOKED SALMON SUSHI	\$3.0
TAI SUSHI	\$3.0
TAKO SUSHI	\$2.5

TOBIKO SUSHI	\$2.0
SPICY SCALLOP	\$13.0

Uncategorized

O-TORO SUSHI	\$10.0
LUNCH BENTO BOX	\$13.0
KING CRAB SUSHI	\$7.0
PEPPER TUNA SUSHI	\$4.0
PEPPER TUNA SASHIMI	\$10.0
BLUEFIN ROLL	\$16.0
HAMACHI TORO SUSHI	\$3.5
SAKE TORO SUSHI	\$2.5
UNI IKURA DON	\$26.0
SUIGEI TOKUBETSU JUNMAI	\$22.0

White Wines

HOUSE CHARDONNAY	\$6.0
GLASS MOUNTAIN CHARDONNAY	\$8.0
CARMEL ROAD (UNOAKED) CHARDONNAY	\$9.0
STAG 'S LEAP HANDS OF TIME	\$15.0
SANTA CRISTINA PINOT GRIGIO	\$8.0
MASI MASIACANO PINOT GRIGIO	\$9.0
ATTEMS PINOT GRIGIO	\$10.0
BONTERRA ORGANIC SAUVIGNON BLANC	\$8.0
PINE RIDGE CHENIN BLANC WHITE BLEND	\$8.0
DR. LOOSEN RIESLING	\$8.0
TERRA D'ORO MOSCATO	\$8.0
POEMA CAVA ROSE	\$7.0
MUMM NAPA BRUT	\$9.0

Bloofin Sushi Menu



Misc

KID- SHRIMP ROLL	\$7.0
KID- TERI CHICKEN	\$7.0
KID- TERI STEAK	\$7.0
SUPER CATERPILLAR ROLL	\$15.0
UNI SHOT	\$7.0
JUGGERNUAT CAB DRINK SPECIAL	\$13.0
DE NOVO CAB DRINK SPECIAL	\$45.0
RED SANGRIA DRINK SPECIAL	\$10.0
ROSE SPLITTER DRINK SPECIAL	\$10.0
SUSHI KIN-MADAI	\$7.0
SASHIME KIN-MADAI	\$15.0
SUSHI ISHI DAI	\$5.0
SASHIMI ISHI DAI	\$12.0

Sashimi

TUNA TARTAR	\$12.0
ALBACORE SASHIMI	\$6.0
AMAEBI SASHIMI	\$18.0
EBI SASHIMI	\$6.0
HAMACHI TORO SASHIMI	\$9.0
HIRAME SASHIMI	\$11.0
IKA SASHIMI	\$8.0
IKURA SASHIMI	\$8.0
MASAGO SASHIMI	\$5.0
MADAI SASHIMI	\$11.0
SABA SASHIMI	\$6.0
SAKE SASHIMI	\$8.0
SAKE TORO SASHIMI	\$8.0
TAKO SASHIMI	\$8.0
TOBIKO SASHIMI	\$5.0

Cocktails

SPICY BLOODY SAKE MARY	\$12.0
NON-SPICY BLOODY SAKE MARY	\$12.0
BLOOFIN TSUNAMI PUNCH	\$12.0
CHOCOLATE-TINI	\$12.0
DRAGON'S BITE	\$12.0
EMPRESS FOUNTAIN	\$12.0
FIZZY GLOW	\$12.0
JAPON MULE	\$12.0
KYOTO ROSE	\$12.0
LYCHEE-TINI	\$12.0
MOJITO	\$12.0
ORIENT APPLE BREEZE	\$12.0
PASSION PLAY	\$12.0
PINA COLADA	\$8.0
RASPBERRY SAKETINI	\$12.0
RUBY DIVA	\$12.0
SHIMMER FUSION	\$12.0
THE MIDORI KISS	\$12.0

Sake

APPLE FLAVOR HOT SAKE	\$6.0
STRAWBERRY FLAVOR HOT SAKE	\$6.0
PEACH FLAVOR HOT SAKE	\$6.0
GEKKEIKAN ZIPANG SPARKLING	\$14.0
HANA LYCHEE	\$12.0
HANA WHITE PEACH	\$12.0
TY KU COCONUT	\$15.0
KIKISUI JUNMAI GINJO	\$20.0
DASSAI 50 JUNMAI DAIGINJO	\$25.0
KIKU MASAMUNE JUNMAI	\$25.0
GEKKEIKAN BLACK GOLD	\$30.0

Bloofin Sushi Menu



NANBU BIJIN JUNMAI GINJO	\$30.0
KIKUMASA NIGORI JUNMAI	\$23.0
KIKUSUI NIGORI PERFECT SNOW	\$19.0
KAMOTSURU DAIGINJO GOLD	\$20.0
HAKKAISAN TOKUBETSU JUNMAI	\$20.0
KIKUMASAMUNE KOUJO	\$13.0
KIKUSUI JG ORGANIC	\$28.0

Nigiri & Sashimi

AKAGAI SUSHI	\$3.0
AKAGAI SASHIMI	\$9.0
AJI WHOLE LIVE (SASHIMI)	\$25.0
ANAGO SUSHI	\$3.5
ANAGO SASHIMI	\$10.0
BLUEFIN TUNA SUSHI	\$4.0
CALIFORNIA UNI SUSHI	\$7.0
CALIFORNIA UNI SASHIMI	\$18.0
CHU TORO SUSHI	\$6.0
JAPANESE UNI SUSHI	\$10.0
JAPANESE UNI SASHIMI	\$26.0
KING SAKE SUSHI	\$3.5
KING SAKE SASHIMI	\$9.0
KANPACHI SUSHI	\$3.5
KANIKAMA SASHIMI	\$6.0
MADAI SUSHI	\$4.0
PEPPER SAKE SUSHI	\$2.5
PEPPER SAKE SASHIMI	\$8.0
SCALLOP SPICY CHOPPED SUSHI	\$3.0
SCALLOP SPICY CHOPPED SASHIMI	\$9.0
SCALLOP WHOLE LIVE	\$13.0
SASHIME SMOKED SALMON	\$8.0
UNAGI (EEL) SASHIMI	\$8.0

FOIE GRAS TRUFFLE SUSHI	\$11.0
FOIE GRAS EEL SUSHI	\$10.0
FOIE GRAS SCALLOP SUSHI	\$10.0
A5 WAGYU SUSHI	\$11.0

Sushi Roll

AVOCADO (6) HR	\$3.0
AVOCADO (6) ROLL	\$4.0
CALIFORNIA (6) HR	\$4.0
CALIFORNIA (6) ROLL	\$6.0
CUCUMBER (6) HR	\$3.0
CUCUMBER (6) ROLL	\$4.0
EEL AVOCADO (6) HR	\$4.0
EEL AVOCADO (6) ROLL	\$6.0
FUTO MAKI (6)	\$8.0
HOUSTON ROLL (5)	\$10.0
NEMO ROLL	\$13.0
PHILADELPHIA (6) HR	\$4.0
PHILADELPHIA (6) ROLL	\$6.0
SALMON (6) HR	\$4.0
SALMON (6) ROLL	\$6.0
SALMON AVOCADO (6) HR	\$4.0
SALMON AVOCADO (6) ROLL	\$6.0
SALMON SKIN HR	\$5.0
SPIDER (5) HR	\$6.0
SPIDER (5) ROLL	\$8.0
SPICY TUNA (6) HR	\$6.0
SPICY TUNA (6) ROLL	\$8.0
SPICY SALMON (6) HR	\$4.0
SPICY SALMON (6) ROLL	\$6.0
SHAGGY DOG ROLL (8)	\$12.0
SHR TEMPURA (5) HR	\$5.0

Bloofin Sushi Menu



SHR TEMPURA (5) ROLL	\$7.0
TUNA (6) HR	\$5.0
TUNA (6) ROLL	\$7.0
TIGER EYE ROLL (5)	\$8.0
YAMI ROLL	\$13.0
YELLOWTAIL (6) HR	\$4.0

YELLOWTAIL (6) ROLL	\$6.0
---------------------	-------

Bloofin Sushi Menu



Bloofin Sushi

6615 N Grand Pkwy WTX
77389, Spring, United States

Opening Hours:

Monday 11:00-14:30 17:00-21:00
Tuesday 11:00-14:30 17:00-21:00
Wednesday 11:00-14:30 17:00-21:00
Thursday 11:00-14:30 17:00-21:00
Friday 11:00-14:30 17:00-22:00
Saturday 11:00-22:00
Sunday 12:00-21:00

Made with menulist.menu

