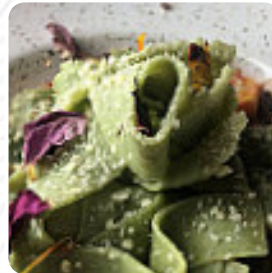




## ***Captain Whidbey Menu***

<https://menulist.menu>

2072 West Captain Whidbey Inn Road WA 98239, Coupeville, United States  
(+1)483606784097,(+1)3606784097 - <http://www.captainwhidbey.com/>



The menu of Captain Whidbey from [Coupeville](#) includes 93 menus. On average, *menus or drinks on [the card](#)* cost about \$14.0. The categories can be viewed on the menu below. The place also offers the possibility to sit outside and have something in nice weather. What [User](#) doesn't like about Captain Whidbey: Captain Whidbey is a fun, kitschy experience overall. We've done happy hour there in the past; the drink menu is great. Unfortunately, our food for dinner was hardly edible, and cost Seattle prices. [read more](#). Captain Whidbey from Coupeville is a relaxed café, where you can have a small snack or cake with a hot coffee or a sweet chocolate. Likewise, the guests of the restaurant prefer the large variety of differing **coffee and tea specialities** that the establishment provides. Here they also grill South American fresh fish, meat, as well as beans and rice, here they serve a **comprehensive brunch** in the morning.

# Captain Whidbey Menu



## Burgers

CAPTAIN BURGER \$19.0

## Casseroles

DELLA CASA

## Soft drinks

LEMONADE \$5.0

## Soups & Salads

DOCKSIDE CAESAR \$13.0

## Lunch

BLACKENED SALMON CLUB \$24.0

## Seafood Dishes

FRIED CALAMARI \$14.0

## Bar Bites

BLISTERED SHISITO PEPPERS \$12.0

## Modifiers

AGUA,

## Rose

ROSÉ, CHATEAU STE. MICHELLE, WA

## Non-alcoholic Drinks

BITBURGER NON-ALCOHOLIC BEER \$5.0

## Non-alcoholic

SEASONAL SHRUB \$6.0

## Raw Bar

YELLOWTAIL CRUDO \$18.0

## Fried Seafood

FISH N CHIPS \$22.0

## Coffee

COFFEE

## Birds of Paradise Sandwiches

SANDPIPER \$12.0

## Slightly Sweet

RIESLING, CHATEAU STE. MICHELLE, WA

## Tastes

THE BOARD \$15.0

## Drinks

DRINKS

## Wines - Sparkling (Splits)

PROSECCO, MIONETTO, IT

## Penn Cove Shellfish

PENN COVE SHELLFISH \$22.0

## Northwest Wines by the Glass

PINOT GRIS, ACROBAT, OR

# Captain Whidbey Menu

## Restaurant Category

BAR

## Dishes are prepared with

SALMON

## Uncategorized

COLUMBIA RIVER SALMON \$38.0

## Non alcoholic drinks

ICED TEA \$4.0

WATER

## Main

CARNAROLI RISOTTO \$26.0

PRESS BURGER \$14.0

## Sparkling / Rosé

BRUT, VEUVE FOURNY GRANDE  
RESERVE, FR

BRUT ROSÉ, GRAN MORAINÉ 2016, OR

## Bottled & Canned Beer

PREMIUM NORTHWEST LAGER  
SEATTLE, WA \$7.0

TIETON CIDER, WA \$7.0

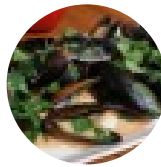
## Dessert Wine

PORT, TOWNSHEND, WA (375ML) \$11.0

SAUTERNES, CHATEAU LES  
GUIZATS, FR \$15.0

PORT, GRAHAM'S FINE TAWNY, PT \$10.0

## These types of dishes are being served



MUSSELS

OYSTERS

BURGER

## Starters

GARLIC TRUFFLE FRIES \$8.0

CAPTAIN'S CHOWDER \$12.0

PNW OYSTERS

DUNGENESS CRAB CAKE \$24.0

## Large Plates

DRY AGED GRASS-FED BEEF

PENN COVE MOULES FRITES \$22.0

MAD HATCHER ROASTED  
CHICKEN \$30.0

NORTH PACIFIC LINGCOD 'FISH N  
CHIPS ' \$22.0

## Sparkling

CAVA, BONAVAL, ES

ROSÉ, PIERRE CHAINIER, FR

BRUT, PIERRE CHAINIER, FR

BLANC DE BLANC, GRUET, NM (HALF)

## Curated Cocktails

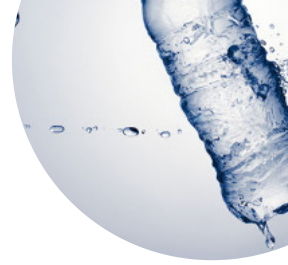
BARREL-AGED BOULEVARDIER  
(LIMITED AVAILABILITY) \$18.0

BITE BRINE \$14.0

PAPER SEAPLANE \$14.0

BLUEBERRY GROVE \$14.0

# Captain Whidbey Menu



## Draft Beer

ROTATING CIDER, ELEMENTAL  
HARD CIDER, ARLINGTON, WA 6.5% ABV \$7.5

OUTER ISLAND IPA, SAN JUAN  
BREWERY, FRIDAY HARBOR, WA 6.5% ABV, 65 IBU \$7.5

ALASKAN WHITE ALE, ALASKAN  
BREWING CO. JUNEAU, AK 5.3% ABV, 15 IBU \$7.5

DRAGONSTOOTH STOUT, ELYSIAN  
BREWING, SEATTLE, WA 8.1% ABV, 36 IBU \$7.5

HONEYMOON PALE ALE, PENN  
COVE BREWING CO. COUPEVILLE, WA 5% ABV, 36 IBU \$7.5

SPACEDUST IPA, ELYSIAN  
BREWING, SEATTLE, WA 8.2% ABV, 73 IBU \$7.5

HAZELICIOUS IPA, RUEBEN'S  
BREWS, SEATTLE, WA 6% ABV, 45 IBU \$7.5

STELLA ARTOIS 5% ABV, 30 IBU \$6.5

## Small Plates

ALDER-SMOKED COLUMBIA  
RIVER SALMON \$18.0

BEER-BRAISED PRAWN  
COCKTAIL \$22.0

BOWL OF DECK FRIES \$8.0

BILLY'S DILLY BREAD \$6.0

SALISH SEA CLAM CHOWDER

GREEN TOMATO CARPACCIO \$13.0

YAKIMA ASPARAGUS TARTINE \$16.0

ORCHARD FARMS LETTUCES \$12.0

PNW BOUNTY BOARD \$20.0

## White

WHIDBEY ISLAND WINERY WHITE, WA

SAUVIGNON BLANC, TOHU, NZ

CHARDONNAY, GRAVEL BAR, WA

VIOGNIER, MCMANIS FAMILY  
VINEYARDS, CA

PINOT GRIS, MARYHILL, OR

SAUVIGNON BLANC, OBELISCO ESTATE  
2019, WA

VIOGNIER, PENNER ASH, OR

CHARDONNAY, BROWNE FAMILY  
VINEYARDS, WA

CHARDONNAY, GRAN MORAINÉ 2016, OR

## Red

SYRAH, UNNAMED SERIES, WA

CABERNET SAUVIGNON, STAG'S LEAP  
ARTEMIS 2017, OR

CABERNET SAUVIGNON, ELEVATION  
2013, WA

SYRAH, LUKE WINE, WA

MALBEC, CAMARADERIE, WA

PINOT NOIR, GRAN MORAINÉ 2017, OR

GSM, TELEGRAMME CHATEAUNEUF DU  
PAPE, FR 2019

SYRAH, CH STE MICHELLE, WA

MERLOT, ELEVATION, WA

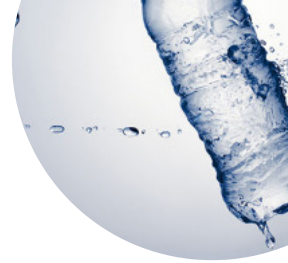
CABERNET SAUVIGNON, BROWNE  
FAMILY VINEYARDS, WA

MALBEC-SYRAH, PASSIONATE, AR

TEMPRANILLO CAMPO VIEJO RIOJA, ES

PINOT NOIR, ERATH, OR

# ***Captain Whidbey Menu***



## ***Captain Whidbey***

2072 West Captain Whidbey Inn  
RoadWA 98239, Coupeville,  
United States

Made with [menulist.menu](https://menulist.menu)

### **Opening Hours:**

Monday 16:00-21:00 16:00-21:00  
Thursday 16:00-21:00 16:00-  
21:00  
Friday 16:00-21:00 16:00-21:00  
Saturday 16:00-21:00 16:00-21:00  
Sunday 16:00-21:00 16:00-21:00  
Tuesday 15:30-20:30  
Wednesday 15:30-20:30

