

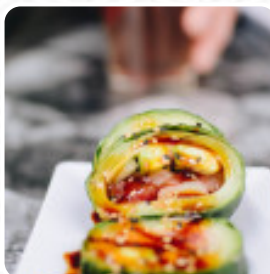
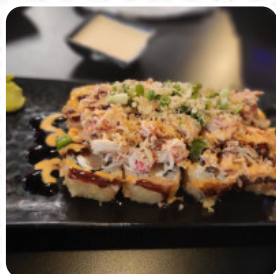


Rock N Roll Sushi Menu

<https://menulist.menu>

4551 Watkins Street, East Milton, United States

(+1)8508894252 - <https://rocknrollsushi.com/locations/pace-fl/>



The Card of Rock N Roll **Sushi** from East Milton includes about 103 different meals and drinks. On average, you pay for a dish / drink about \$11.0. What [Timothy Martin](#) likes about Rock N Roll Sushi:

I try and eat there weekly. Staff is always friendly, place is clean, and the sushi is consistent and good. Music is a nice bonus as well. Go try it out if you haven't been here. Don't forget to tip the folks rolling up that goodness. Cullen and Carl roll up some great food, Mark supervises, and Kacie is the best! [read more](#). What

[Esmeralda](#) doesn't like about Rock N Roll Sushi:

The driver was awesome! My issue is with the restaurant. They sent a salad looking orange instead of green! Awful and I paid for that. They sent the wrong rice! They put eggs and I asked for white rice. I also asked for extra chicken and paid 5\$ extra and was a tiny portion for 21 dollars. I paid around \$60 for a low quality meal. I don't think they read the requests. Is the second time with a similar experience. The... [read more](#). With fresh ingredients like fish, vegetables and meat, Rock N Roll Sushi from East Milton prepares for you delicious sushi (e.g., Nigiri and Inside-Out) and numerous additional variations, on the daily specials there are also a lot of **Asian menus**. After the meal (or during it), you have the opportunity to still relax at the bar with a **alcoholic or non-alcoholic drink**, The successful fusion of different menus with fresh and partially daring products is highly valued by the guests - a nice example of Asian Fusion.

Rock N Roll Sushi Menu



Alcoholic Drinks

BEER

Pasta

SHRIMP LOBSTER \$26.0

Main courses

SUSHI

Side dishes

CUCUMBER SALAD \$5.0

Sushi Nigiri

TOBIKO NIGIRI \$4.5

Beef dishes

FILET MIGNON \$20.0

For the small hunger

JALAPENO POPPERS \$8.0

Starters

YELLOW TAIL SASHIMI \$6.0

Fried rice

VEGETABLES FRIED RICE \$11.0

Inside Out Rolls

TUNA AVOCADO ROLL \$7.0

Fish

SALMON ROLL \$9.0

Makiman Chef Specials

BEEF TATAKI \$10.0

Signature Rolls

VOLCANO ROLL \$13.0

Japanese specialties

MISO SOUP \$4.0

Asian specialties

EDAMAME \$5.0

Inside-Out-Maki

BOSTON ROLL \$7.0

Vegetables

EGG ROLLS \$8.0

Fried Rice

FRIED RICE \$6.0

Sushi Roll

SPICY SHRIMP ROLL \$8.0

Japanese salads

GINGER SALAD \$4.0

Sushi Bar

JAPANESE BAGEL ROLL \$8.0

Nigiri Sashimi

EEL UNAGI SASHIMI \$6.0

Rock N Roll Sushi Menu



Hibachi

SHRIMP CHICKEN \$19.0

After Party

HALL OF FAME BROWNIES \$8.0

Classic Rock

RNR ROLL \$9.0

Appetizer From Sushi Bar

TUNA TATAKI \$10.0

Regular Roll

SUPER CRUNCH \$8.0

Sushi Roll or Hand Roll

SHRIMP TEMPURA ROLL \$8.0

A la Carte | Sushi Nigiri

EEL UNAGI NIGIRI \$5.0

Biscuits and Cookies

CHEESECAKE \$8.0

Thai Style Salads

SQUID SALAD \$5.0

55 Add

SAMPLER \$14.0

2 Piece Nigiri

FRESH SALMON NIGIRI \$4.5

Salads to Order

AHI TUNA SALAD \$13.0

Kabuki Special Rolls

KISS ROLL \$15.0

Sushi Bar Sashimi

FRESH SALMON SASHIMI \$5.0

Sushi maki (6-8 pc)

PANAMA ROLL \$16.0

These types of dishes are being served

LOBSTER \$21.0

Uncategorized

SPICY CRAWFISH ROLL \$8.0

Salads

SPICY SASHIMI SALAD \$11.0

SEAWEED SALAD \$5.0

Appetizers

CRISPY WONTONS \$8.0

SPICY TUNA SASHIMI SALAD \$9.0

Combination Entrees

FILET MIGNON CHICKEN \$27.0

FILET MIGNON SHRIMP \$22.0

Rock N Roll Sushi Menu



Kids Rock

KID'S TEMPURA SHRIMP FRENCH FRIES	\$7.0
KID'S CHICKEN NUGGETS FRENCH FRIES	\$6.0

Enhance Your Salad with These Options

ADD CHICKEN	\$5.0
ADD SHRIMP	\$5.5

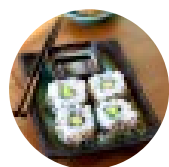
Nigiri

SHRIMP NIGIRI	\$4.3
YELLOW TAIL NIGIRI	\$4.5
SMOKED SALMON NIGIRI	\$4.5

Sushi Rolls

RAINBOW ROLL	\$11.0
SPIDER ROLL	\$10.0
VEGGIE ROLL	\$6.0

Sushi



CALIFORNIA ROLL	\$6.0
SPICY TUNA ROLL	\$8.0
ALBACORE TUNA NIGIRI	\$5.0

Rock N Raw

RED TUNA NIGIRI	\$5.0
KRAB STICK NIGIRI	\$4.3
KRAB STICK SASHIMI	\$4.5

Dishes are prepared with

CHICKEN	\$16.0
SHRIMP	\$17.0
VEGETABLES	\$6.0

Sashimi

RED TUNA SASHIMI	\$6.0
ALBACORE TUNA SASHIMI	\$6.0
SMOKED SALMON SASHIMI	\$5.0
SHRIMP SASHIMI	\$4.5

Popular Items



THRILLER ROLL	\$15.0
SWEET HOME ALABAMA ROLL	\$13.0
HEART ROLL	\$16.0
JAILHOUSE ROLL	\$15.0

Opening Acts

TWISTED TUNA	\$11.0
TNT SHRIMP	\$8.0
HEADBANGER SHRIMP	\$8.0
ROCKIN' LOBSTER	\$13.0

Back Stage Grill

ADD FILET	\$8.0
LOBSTER FILET MIGNON	\$29.0
CHICKEN LOBSTER	\$27.0
CHICKEN SHRIMP FILET MIGNON	\$27.0

Headliners

TOMMY LEE ROLL	\$17.0
AXL ROLL	\$13.0

Rock N Roll Sushi Menu



PRIMA DONNA ROLL \$14.0

JAM SESH ROLL \$15.0
BLACK PEARL

GOOD TIMES ROLL \$12.0

ABBEY ROAD ROLL \$14.0

THE EXPERIENCE ROLL \$14.0

SUNSET STRIP ROLL \$15.0

SAN QUENTIN ROLL \$15.0

JOURNEY ROLL \$15.0

SCORPIONS ROLL \$15.0

SANDMAN ROLL \$13.0

LEOPARD ROLL \$13.0

ZEPPLIN ROLL \$17.0

VELCRO PYGMIES ROLL \$11.0

CHILI PEPPERS ROLL \$15.0

SHARP DRESS ROLL LOBSTER ROLL \$16.0

CREW ROLL \$15.0

GREEN ROOM ROLL \$15.0

STONES ROLL \$16.0

CYNDI ROLL \$16.0

SLASH ROLL \$15.0

REGGAE ROLL

\$14.0

Rock N Roll Sushi Menu



Rock N Roll Sushi

4551 Watkins Street, East Milton,
United States

Opening Hours:

Monday 11:00 -21:00
Tuesday 11:00 -21:00
Wednesday 11:00 -21:00
Thursday 11:00 -21:00
Friday 11:00 -22:00
Saturday 11:00 -22:00
Sunday 11:00 -21:00

Made with menulist.menu

 gallery image

