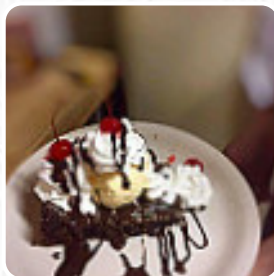




The Cafe Menu

<https://menulist.menu>

Patagonia & The Mountain Empire, 3280 Hwy 82, SONOITA, United States
(+1)5204555044 - <http://www.cafesonoita.com>



A **complete menu** of **The Cafe** from SONOITA covering all 31 courses and drinks can be found here on the card. For seasonal or weekly deals, please get in touch via phone or use the contact details provided on the website. What User likes about The Cafe:

Great lunch spot we stopped at in-between visiting the wineries nearby! Good service, nice patio area. We waited to stop here for lunch until mid-afternoon on the Sunday we visited because it looked very busy when we first drove by during the lunch hour. Glad we waited so that we didn't feel rushed to leave. Would love to stop here again the next time we visit. [read more](#). The restaurant and its rooms are wheelchair accessible and thus usable with a wheelchair or physiological limitations, Depending on the weather conditions, you can also sit outside and be served. What User doesn't like about The Cafe:

waited an hour and a half for 2 burgers and 2 pastrami sandwiches. 2 the sandwiches came out cold? not warm?.cold both burgers were waaaaay over boiled?.as for med rare and was well made. it took another 15 minutes to replace the two sandwiches and another 10 for the burger. had asked about the manager?.nie saw him/her. not that I was looking for a free meal, but they never offered to adjust the bill. it's a scandal?... [read more](#). If you want to a cocktail after work and hang out with friends, The Cafe from [SONOITA](#) is a good bar, Naturally, you can't miss out on the **delicious burgers**, which are accompanied by sides like fries, salads, or wedges offered. If you have little appetite, you can treat yourself to one of the delicious sandwiches, a healthy salad or another snack, The atmosphere also makes the eating of typical *Western dishes and drinks* an unforgettable experience.

The Cafe Menu

Sandwiches & Hot Paninis

CHEESEBURGER

Main courses

TOPPINGS

Extras

SWEET POTATO

Sandwich, Bagels, Burger

BLT

Side dishes

SWEET POTATO FRIES

Starters & Salads

FRIES

Little things

CROISSANT

SALSAS

CHIPOTLE

Soup

MUSHROOM SOUP

Breaded Special Rolls

APPLES

Coffee

COFFEE

Drinks

DRINKS

Condiments and Sauces

MUSHROOM

Sandwiches

B.L.T

CHEESE SANDWICH

Fingerfood

JALAPENO

ZWIEBELRINGE

Burgers

BEEF BURGER

B.L.T.

BACON CHEESEBURGER

These types of dishes are being served



PANINI

TURKEY

SANDWICH

SOUP

BURGER

Dishes are prepared with

BACON

ONION

POTATOES

BEEF



The Cafe Menu

CHEESE

CHILI



The Cafe Menu



The Cafe

Patagonia & The Mountain
Empire, 3280 Hwy 82, SONOITA,
United States

Opening Hours:
Sunday 11:00-15:00
Monday 11:00-15:00
Tuesday 11:00-15:00
Wednesday 11:00-15:00
Thursday 11:00-15:00
Friday 11:00-15:00
Saturday 11:00-15:00

Made with menulist.menu

