

The Breakfast Club

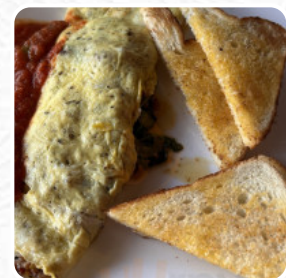
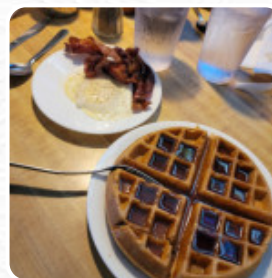
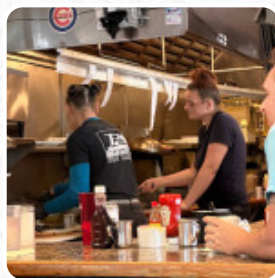
The Legendary Way To Start The Day!



Breakfast Club Menu

<https://menuweb.menu>

1500 Butler Avenue, Tybee Island, 31328, United States Of America
+19127865984 - <https://breakfastclubtybeeisland.com/>



The menu of Breakfast Club from Tybee Island comprises about **86** different menus and drinks. On average you pay about \$9.1 for a dish / drink. Breakfast Club, located in the charming Tybee Island, GA, is a beloved American restaurant that boasts an impressive average rating of 4.2 stars. Open daily from 7:00 AM to 12:30 PM, it's the perfect spot to enjoy a delightful breakfast. Whether you're dining with a friend or celebrating with a larger group, feel free to call ahead at (912) 786-5984 to reserve your table. Guests appreciate the quick service and inviting atmosphere. If you're interested in exploring similar dining options, consider visiting Sunrise Restaurant or The Sand Bar. We'd love to hear about your experience—don't forget to leave a review!.

Breakfast Club Menu



Salads

PICO DE GALLO

Sandwiches & Hot Paninis

HAMBURGER

Side Dishes

GRITS

Toast

FRENCH TOAST

Breakfast

SCRAMBLED EGGS

Sauces

GRAVY

Fish

SEA BASS

Steaks

COUNTRY FRIED STEAK

Toasts

EGG FLORENTINE

Waffles

SPINACH AND GARLIC SAUTÉ \$6.5

Hot Drinks

COFFEE

Egg Dishes

OMELETTE

Sweets & Desserts

BELGIAN WAFFLE

Coffee

HOT COFFEE

Breakfast Specialties

WAFFLE WITH CHOICE OF MEAT \$7.0

Three Egg Omelettes

HAM CHEESE OMELETTE \$9.5

Custom Eggs

2 EGGS \$6.2

The Waffle Iron

PECAN WAFFLE \$7.0

Breakfast On The Side

1 EGG \$6.0

Omelettes And Skillets

POPEYE OMELETTE \$13.0

Simply Breakfast

CHICKEN FRIED CHICKEN
BREAKFAST \$12.0

Eggs & Omelettes

2 EGGS W/ ANY MEAT \$7.9

Breakfast Club Menu



Helen's Solidarity

SMACKWATER JACK OMELETTE \$14.0

Awful Good Waffles!

PECAN WAFFLE WITH CHOICE OF MEAT

Restaurant Category

FRENCH

Beginners Breakfast

1 EGG W/ ANY MEAT \$7.4

Hearty Breakfast - Eggs And Omelettes

VEGGIE OMELETTE \$10.8

Non Alcoholic Drinks

APPLE JUICE

WATER

Drinks

BEER

DRINKS

Dessert

WAFFLE

CREPES

Mexican Dishes

BREAKFAST BURRITO

BURRITO

An Eggs-Citing Way To Start The Day

2 EGGS WITH SPECIALTY MEAT \$8.2

1 EGG WITH SPECIALTY MEAT \$7.7

Burger

CHEESEBURGER DELUXE \$13.8

CHEESEBURGER \$11.5

HAMBURGER DELUXE \$12.5

Soft Drinks

JUICE

ORANGE JUICE

COKE

Omelettes

CHEESE OMELETTE \$8.3

SPINACH OMELETTE \$10.5

DENVER OMELETTE \$11.0

Sandwiches

BLT \$6.8

HLT \$6.8

EGG SANDWICH \$4.3

FRIED EGG SANDWICH

CHEESE SANDWICH

Omelettes And Other Great Fare

THE LUIGI!!! \$14.0

PMS OMELETTE \$14.0

GRILL CLEANERS SPECIAL \$14.0

Breakfast Club Menu



WINDJAMMER HASH BROWNS	\$13.0
BLACKHAWK BURRITO	\$16.8

BURGER
PANINI

Seaside Sandwiches

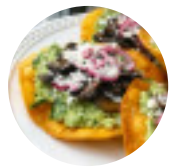
EGG, TOMATO AND CHEDDAR	\$5.5
GRILLED ANY MEAT/ANY CHEESE!	\$5.8
ANY MEAT, EGG, CHZ SANDWICH	\$6.3
ANY MEAT EGG SANDWICH	\$5.8
GRILLED CHZ CHED OR AMERICAN	\$4.5
GRILLED CHZ TOMATO	\$5.3
EGG CHZ SANDWICH	\$4.9

Ingredients Used



MUSHROOMS
BUTTER
ONION
BLACK BEANS
CHEESE
BEANS
CHORIZO
LETTUCE
JALAPENOS
BACON
SHRIMP
CORNEB BEEF
BEEF
EGG
SAUSAGE
SYRUP

These Types Of Dishes Are Being Served



TOSTADAS
TUNA STEAK
CHICKEN
WRAP
MEAT

Breakfast Club

1500 Butler Avenue, Tybee
Island, 31328, United States Of
America

Opening Hours:

Monday 07:00 -00:30
Tuesday 07:00 -00:30
Thursday 07:00 -00:30
Friday 07:00 -00:30
Saturday 07:00 -00:30
Sunday 07:00 -00:30

Made with menuweb.menu



Breakfast Menu	07:00 - 10:00
Breakfast Menu	10:00 - 11:00
Breakfast Menu	11:00 - 12:00
Breakfast Menu	12:00 - 13:00
Breakfast Menu	13:00 - 14:00
Breakfast Menu	14:00 - 15:00
Breakfast Menu	15:00 - 16:00
Breakfast Menu	16:00 - 17:00
Breakfast Menu	17:00 - 18:00
Breakfast Menu	18:00 - 19:00
Breakfast Menu	19:00 - 20:00
Breakfast Menu	20:00 - 21:00
Breakfast Menu	21:00 - 22:00
Breakfast Menu	22:00 - 23:00
Breakfast Menu	23:00 - 00:00