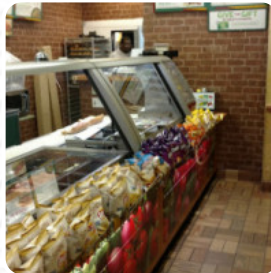




Subway Menu

<https://menulist.menu>

50 Whitney Ave New Haven, CT 06510-1258, United States
(+1)2037870400 - <https://www.restaurants.subway.com>



The restaurant from New Haven offers **119** different *meals and drinks* on [the menu](#) at an average \$8.8. What [Garry Runolfsson](#) likes about Subway:

During a recent trip to New Haven with a colleague and 30 of our students, there was a need to order lunch for our entire group and Subway seemed like an affordable option. My colleague and I contacted this subway before arrival and once there, ordered 16 sandwiches each! This was an exhausting yet comical experience, especially afterward, and we would like to express Ruben and Daniel a world of gratitude for their e... [read more](#). What [Dale Roberts](#) doesn't like about Subway:

What happened to Prakruti also happened to me. I ordered online to pick up at 8:25pm Dec 8. But when I arrived there they were already closed although the closed time was said to be 9pm Sunday. What was really frustrating was their rudeness. They simply ignored you without any attempt to explain. I immediately contacted their customer service but still no solution. I guess I won't go to any Subway the rest of my life... [read more](#). If you're in a rush, you can get tasty **Fast-Food meals just the way you like it** from Subway in New Haven, freshly prepared for you in short time, For a snack, you can also have the delicious sandwiches, healthy salads and other snacks.

Subway Menu



Burgers

B.L.T. \$7.5

Starters & Salads

POTATOE CHIPS

Meat Dishes

MEATBALL MARINARA \$7.1

Veggie Patty Sandwich

VEGGIE PATTY \$7.7

Premium Subs

STEAK CHEESE \$8.2

Fresh Melts®

CHICKEN BACON RANCH MELT \$8.7

Uncategorized

COLD CUT COMBO \$7.1

HAM CHEESE MELT \$8.1

Dishes are prepared with

WE HAVE \$7.5

BLACK FOREST HAM \$7.1

OVEN ROASTED TURKEY HAM \$7.5

Breakfast

BACON, EGG CHEESE WRAP (860 CALS) \$11.5

BLACK FOREST HAM, EGG CHEESE WRAP (770 CALS) \$11.5

EGG CHEESE WRAP (700 CALS) \$11.5

STEAK, EGG CHEESE WRAP (820 CALS) \$11.5

Chicken



SWEET ONION CHICKEN TERIYAKI \$8.1

GRILLED CHICKEN \$8.1

ROTISSERIE-STYLE CHICKEN \$8.2

BUFFALO CHICKEN \$8.1

These types of dishes are being served



OVEN ROASTED TURKEY \$7.5

CHICKEN BACON RANCH \$9.4

ROAST BEEF \$8.1

BUFFALO CHICKEN MELT \$9.0

SANDWICH

PANINI

Drinks



COCA-COLA CLASSIC (240 CALS) \$3.0

SPRITE (230 CALS) \$3.0

VITAMIN WATER XXX (80 CALS) \$2.9

SIMPLY ORANGE (160 CALS) \$2.5

DASANI WATER (0 CALS) \$2.9

1% LOW FAT MILK (110 CALS) \$2.6

HONEST KIDS SUPER FRUIT PUNCH (35 CALS) \$2.6

DRINKS

Subway Menu



Side dishes

	SUNCHIPS HARVEST CHEDDAR (210 CALS)	\$1.6
	CHOCOLATE CHIP (210 CALC)	\$1.0
	DORITOS NACHO CHEESE (240 CALC)	\$1.6
	MISS VICKIE'S JALAPEÑO (210 CALC)	\$1.6
	LAY'S CLASSIC (240 CALS)	\$1.6
	BAKED LAY'S ORIGINAL (130 CALS)	\$1.6
	RASPBERRY CHEESECAKE (210 CALC)	\$1.1
	WHITE CHIP MACADAMIA NUT (220 CALC)	\$1.0
	OATMEAL RAISIN (200 CALS)	\$1.0

Sandwiches

	ITALIAN B.M.T.	\$7.5
	VEGGIE DELITE	\$6.2
	STEAK CHEESE MELT	\$9.0
	MEATBALL MARINARA MELT	\$8.1
	TUNA MELT	\$8.7
	SPICY ITALIAN MELT	\$8.1
	ITALIAN B.M.T. MELT	\$8.7
	OVEN ROASTED TURKEY MELT	\$8.7
	BACON, EGG CHEESE	\$7.1
	BLACK FOREST HAM, EGG CHEESE	\$7.1
	EGG CHEESE	\$7.1
	STEAK, EGG CHEESE	\$7.5

Subway® Series

#8 THE GREAT GARLIC	\$7.5
#2 THE OUTLAW	\$7.2



#7 THE MEXICALI	\$8.2
#10 ALL-AMERICAN CLUB	\$6.3
#1 THE PHILLY	\$7.2
#6 THE BOSS	\$9.2
#3 THE MONSTER	\$8.2
#12 TURKEY CALI CLUB	\$7.9
#4 SUPREME MEATS	\$6.5
#5 BELLA MOZZA	\$6.5
#9 THE CHAMP	\$7.2
#11 SUBWAY CLUB	\$6.5

No Bready Bowls™



STEAK CHEESE (380 CALC)	\$12.5
ROAST BEEF (230 CALC)	\$12.0
TUNA (550 CALS)	\$11.2
BLACK FOREST HAM (170 CALS)	\$10.0
BUFFALO CHICKEN (380 CALS)	\$12.5
B.L.T. (360 CALS)	\$11.4
CHICKEN BACON RANCH (760 CALC)	\$13.5
COLD CUT COMBO (260 CALS)	\$9.9
GRILLED CHICKEN (200 CALS)	\$12.4
ITALIAN B.M.T. (410 CALS)	\$11.2
MEATBALL MARINARA (530 CALS)	\$9.9
OVEN ROASTED TURKEY (150 CALC)	\$11.2
OVEN ROASTED TURKEY HAM (160 CALS)	\$11.4
ROTISSERIE-STYLE CHICKEN (230 CALC)	\$12.4
SPICY ITALIAN (550 CALS)	\$10.0
SWEET ONION CHICKEN TERIYAKI (330 CALS)	\$12.5

Subway Menu



VEGGIE PATTY (380 CALS) \$11.4

VEGGIE PATTY (220 CALS) \$10.2

Salads



VEGGIE DELITE (50 CALS) \$8.7

OVEN ROASTED TURKEY HAM (110 CALS) \$10.0

ITALIAN B.M.T. (240 CALS) \$10.0

CHICKEN BACON RANCH (490 CALS) \$11.9

GRILLED CHICKEN (130 CALS) \$10.6

OVEN ROASTED TURKEY (110 CALS) \$10.0

BLACK FOREST HAM (120 CALS) \$9.6

BUFFALO CHICKEN (300 CALS) \$10.6

B.L.T. (210 CALS) \$10.0

COLD CUT COMBO (160 CALS) \$9.6

MEATBALL MARINARA (300 CALS) \$9.6

ROAST BEEF (150 CALS) \$10.6

ROTISSERIE-STYLE CHICKEN (140 CALS) \$10.7

SPICY ITALIAN (310 CALS) \$9.6

STEAK CHEESE (210 CALS) \$10.7

SWEET ONION CHICKEN TERIYAKI (250 CALS) \$10.6

TUNA (310 CALS) \$10.0

Wraps



ITALIAN B.M.T. (680 CALS) \$11.2

TUNA (820 CALS) \$11.5

B.L.T. (620 CALS) \$11.4

CHICKEN BACON RANCH (840 CALS) \$11.9

OVEN ROASTED TURKEY HAM (440 CALS) \$11.5

VEGGIE PATTY (660 CALS) \$11.4

VEGGIE DELITE (330 CALS) \$10.2

BLACK FOREST HAM (440 CALS) \$11.5

BUFFALO CHICKEN (560 CALS) \$11.5

COLD CUT COMBO (530 CALS) \$11.5

GRILLED CHICKEN (470 CALS) \$11.5

MEATBALL MARINARA (800 CALS) \$11.5

OVEN ROASTED TURKEY (430 CALS) \$11.2

ROAST BEEF (500 CALS) \$11.9

ROTISSERIE-STYLE CHICKEN (500 CALS) \$11.5

SPICY ITALIAN (820 CALS) \$10.0

STEAK CHEESE (570 CALS) \$11.5

SWEET ONION CHICKEN TERIYAKI (590 CALS) \$11.5

Subway Menu



Subway

50 Whitney Ave New Haven, CT
06510-1258, United States

Opening Hours:

Monday 07:00-20:00
Tuesday 07:00-20:00
Wednesday 07:00-20:00
Thursday 07:00-20:00
Friday 07:00-20:00
Saturday 07:00-20:00

Made with menulist.menu

