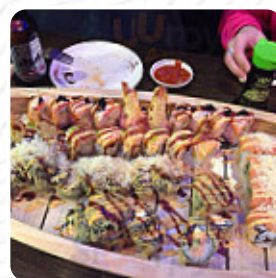
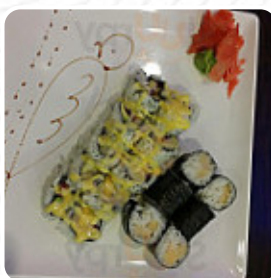
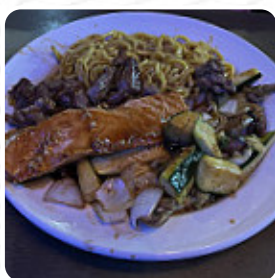


## Ichiban Menu

<https://menuweb.menu>

9500 N 129th E Ave #100, 74055, Owasso, US, United States  
 +19182722323 - <http://www.ichibanjapanesesteakhouseok.com/>



The restaurant from Owasso offers **217** different **dishes and drinks** on [the menu](#) at an average price of \$10.6.

Ichiban Japanese Steakhouse Sushi Bar in Owasso, OK, is a highly regarded Asian restaurant with an impressive average rating of 4.3 stars. Diners rave about the exceptional experience at Ichiban, making it a must-visit destination. Open today from 11:00 AM to 9:00 PM, be sure to call ahead at (918) 272 2323 to reserve your table and avoid any wait. Ichiban offers a variety of vegetarian options alongside its delectable menu filled with sushi and grilled specialties. Experience the delightful atmosphere and exquisite flavors that have drawn so many to this gem. If you're looking for similar dining experiences, consider visiting S B's Burger Joint or Jimmy John's. Have you enjoyed a meal at Ichiban? We would love to hear your thoughts!

# Ichiban Menu



## Nigiri

SMELT ROE \$4.0

## Vegetarian

VEGETABLE FRIED RICE \$7.0

## Extras

SUSHI RICE \$1.9

## Drinks

DRINKS

## Chicken

CHICKEN KATSU \$5.0

## Specialties

ICHIBAN ROLL \$15.8

## Beef Dishes

FILET MIGNON

## Nigiri Sushi

SNOW CRAB \$4.0

## Steaks

RIBEYE STEAK

## Maki Sushi

SALMON SKIN ROLL \$5.0

## Inside Out

TIGER ROLL \$12.8

## Tartar

SALMON TARTAR \$10.0

## Dim Sum

PORK DUMPLING (5) \$4.3

## Rice Dishes

CHICKEN FRIED RICE \$8.0

## Noodle Dishes

FRIED NOODLE \$2.0

## Sliders

CRAB CAKE (4) \$6.0

## Special Roll

COWBOY ROLL \$12.8

## Signature Rolls

VOLCANO ROLL \$12.8

## Inside-Out-Maki

BOSTON ROLL \$5.0

## Uramaki - Inside Out Roll

SPICY CRUNCH TUNA ROLL \$5.5

## Seafood Dishes

FRIED CALAMARI \$6.0

## Sharing Platters

SALMON PLATTER \$20.0

# Ichiban Menu



## Chef's Recommendations

PHOENIX ROLL (8 PIECES) \$12.8

## Party Tray

ICHIBAN TRAY \$53.0

## Sushi Or Sashimi A La Carte

SUPER WHITE TUNA \$5.0

## Healthy Options

TUNA PLATTER \$20.0

## Chef's Special Roll

PINK LADY ROLL \$12.8

## Featured Items

NARUTO ROLL \$11.8

## Sushi Entrees

SUSHI AND SASHIMI COMBO \$27.0

## Appetizer From Kitchen

FRIED OYSTER (6) \$6.3

## Hibachi

RED SNAPPER HIBACHI DINNER \$19.0

## Sushi Bar Entree

VEGETABLE ROLL DINNER \$13.0

## Surf & Turf

RIBEYE LOBSTER \$31.0

## Sushi Bar Special Entrée

SPICY MAKI COMBO \$13.0

## Soba Noodles

HOUSE SPECIAL SOBA NOODLES \$11.0

## Small Rolls

ESCOLAR ROLL \$5.0

## Cold Plates

CRAB SALAD \$4.0

## Chef Recommendations

ROAST PORK MISO RAMEN \$13.0

## Japanese Noodles Soup

VEGETABLE UDON \$8.0

## Sushi And Sashimi A La Carte

SEA URCHIN \$8.0

## Bungalow Favorites

SHRIMP MISO RAMEN \$13.0

## Noodle & Rice Dishes

CHICKEN UDON \$9.0

## Most Loved Restaurants

SPICY CRUNCH YELLOWTAIL ROLL \$5.5

## Sashimi and Nigiri

SWEET EGG \$3.0

# Ichiban Menu



## Cooked Special Rolls

AMERICAN DREAM ROLL \$12.8

## Japanese Mains

BEEF SOBA NOODLES \$10.0

## Hibachi Lunch Specials

N.Y. STRIP HIBACHI LUNCH SPECIAL \$11.0

## Udon, Soba, Fried Rice

PLAIN SOBA NOODLE \$8.0

## Online Exclusive

TEMPURA SAMPLE \$7.5

## Chef's Special Roll

GOLDEN DRAGON ROLL (8 PIECES) \$13.8

## Japanese Vegetable Rolls

SWEET POTATO ROLL \$4.0

## Lunch Hibachi Entrées

HIBACHI COMBINATION LUNCH SPECIAL \$11.0

## From The Hibachi Grill Lunch Specials

FILET MIGNON HIBACHI LUNCH SPECIAL \$16.0

## Dinner Hibachi Entrees

RIBEYE HIBACHI DINNER \$20.0

## Sake Bomb Special Rolls

SPICY GIRL (8 PIECES) \$12.8

## Solo Hibachi Lunch Special

CALAMARI HIBACHI LUNCH SPECIAL \$9.0

## Dinner Square Bento Box

DINNER SQUARE BENTO BOX \$16.0

## Ichiban Special Dinner

SALMON, SCALLOPS CALAMARI \$26.0

## Restaurant Category

STEAKHOUSE

## Special Fuji Yama Dishes

CATERPILLAR ROLL \$12.8

## Flamed Rolls

KAMIKAZE ROLL \$12.8

## Rice Bowl With Toppings

UNAGI DON \$15.0

## Main Dishes - Udon

BEEF UDON \$10.0

## Special Breaded Sushi

ALASKA ROLL \$5.5

# Ichiban Menu



## Umami's Special Rolls

LONG ISLAND ROLL \$12.8

## Soup, Salad, And Chili

SALMON SKIN SALAD \$6.0

## Salads

AVOCADO SALAD \$4.5

SEAWEED SALAD \$5.0

## Soups

VEGETABLE TOFU SOUP \$5.0

SEAFOOD SOUP \$7.0

## Sashimi

TUNA TARTAR \$10.0

SASHIMI DELUXE \$22.0

## Salad

SPICY OCTOPUS SALAD \$5.0

GREEN SALAD \$2.0

## Appetizer

SHUMAI (6) \$6.0

TEMPURA

## Noodles

VEGETABLE SOBA NOODLES \$8.0

CHICKEN SOBA NOODLES \$9.0

## Japanese Specialties

MISO SOUP \$2.0

VEGETABLE TEMPURA \$5.0

## Chinese Dishes

CHICKEN LO MEIN \$9.0

LO MEIN

## Japanese Starters

SUSHI APPETIZER \$9.0

SASHIMI APPETIZER \$10.0

## Specialty Rolls

GODZILLA ROLL \$11.8

BLACK DRAGON (8 PIECES) \$13.8

## Sushi Or Sashimi

SALMON ROE \$5.0

FLYING FISH ROE \$5.0

## Roll And Hand Roll

EEL CUCUMBER ROLL \$6.0

SPICY CRUNCH SALMON ROLL \$5.5

## A-La-Carte Nigiri/Sashimi (2Pc Per Order)

SWEET SHRIMP \$7.0

QUAIL EGG \$3.0

## Seafood

SHRIMP TEMPURA \$7.0

OCTOPUS AND ORZO \$4.0

CALAMARI \$6.0

## Side Dishes

SHRIMP SOBA NOODLES \$10.0

STEAMED RICE \$1.5



# Ichiban Menu



## RICE

## Fish

SMOKED SALMON \$5.0

SEA BASS

SALMON ROLL \$5.0

## Special Rolls



YELLOWTAIL  
JALAPEÑO \$10.0

FUJI ROLL (8 PIECES) \$8.0

LOBSTER ROLL (8  
PIECES) \$8.0

## Udon

PLAIN UDON \$8.0

SHRIMP UDON \$10.0

HOUSE SPECIAL UDON \$11.0

## Hibachi Dinner

VEGETABLE HIBACHI DINNER (NO  
SHRIMP APPETIZER) \$11.0

N.Y. STRIP HIBACHI DINNER \$18.5

LOBSTER (2 TAILS) HIBACHI  
DINNER \$33.0

## Ramen Noodles

ROAST PORK TONKOSTSU \$13.0

SHRIMP TONKOSTSU \$13.0

BEEF TONKOSTSU \$13.0

## Sushi

CALIFORNIA ROLL \$5.0

SASHIMI

SUSHI LUNCH \$11.0

SASHIMI LUNCH \$11.0

## Sushi Bar Entrees

SUSHI REGULAR \$18.0

SUSHI DELUXE \$21.0

SASHIMI REGULAR \$19.0

VEGGIE SUSHI \$13.5

## Fried Rice

PLAIN FRIED RICE \$5.0

BEEF FRIED RICE \$9.0

SHRIMP FRIED RICE \$9.0

HOUSE SPECIAL FRIED RICE \$10.0

FRIED RICE \$2.0

## Lo Mein



VEGETABLE LO MEIN \$7.0

PLAIN LO MEIN \$5.0

BEEF LO MEIN \$10.0

SHRIMP LO MEIN \$10.0

HOUSE SPECIAL LO MEIN \$11.0

## Popular Items

FILET MIGNON, CHICKEN SHRIMP \$29.0

BEEF MISO RAMEN \$13.0

ANY 2 ROLL \$9.0

ANY 3 ROLL \$13.0

CHICKEN HIBACHI LUNCH SPECIAL \$9.0

## Hibachi Lunch Special

VEGETABLE HIBACHI LUNCH  
SPECIAL \$7.0

# Ichiban Menu



SALMON HIBACHI LUNCH SPECIAL	\$10.5
RIBEYE HIBACHI LUNCH SPECIAL	\$14.0
SHRIMP HIBACHI LUNCH SPECIAL	\$9.5
SCALLOP HIBACHI LUNCH SPECIAL	\$11.0

## Hibachi Dinner Combination

CHICKEN HIBACHI DINNER COMBO	\$18.0
N.Y. STRIP HIBACHI DINNER COMBO	\$21.0
RIBEYE HIBACHI DINNER COMBO	\$23.0
FILET MIGNON HIBACHI DINNER COMBO	\$28.0
LOBSTER HIBACHI DINNER COMBO	\$29.0

## Ichiban Special Roll

LION KING ROLL (10 PIECES)	\$14.8
FIRECRACKER ROLL (10 PIECES)	\$13.8
OWASSO ROLL	\$11.8
AK 47 (8 PIECES)	\$14.8
FRIED ISLAND ROLL (10 PIECES)	\$15.8

## These Types Of Dishes Are Being Served

CHICKEN	\$4.0
LOBSTER	
SALAD	
SOUP	
TUNA STEAK	
NOODLES	
APPETIZER	

## Uncategorized

LUNCH BENTO BOX	\$10.5
CALAMARI HIBACHI DINNER	\$15.0
CHICKEN HIBACHI DINNER	\$14.0
FILET MIGNON HIBACHI DINNER	\$23.0
SALMON HIBACHI DINNER	\$18.0
SCALLOP HIBACHI DINNER	\$18.5
SHRIMP HIBACHI DINNER	\$17.0

## Makimono

SPICY CRUNCH ESCOLAR ROLL	\$5.5
DOUBLE TEMPURA ROLL 8 PIECES)	\$6.0
HONSON ROLL( 10 PIECES)	\$6.0
MANGO TUNA (8 PIECES)	\$9.0
NEW YORK ROLL (10 PIECES)	\$10.0
SUPER CALIFORNIA (8 PIECES)	\$7.0
BIG JOHN ROLL (10 PIECES)	\$9.0
CRAY ROLL	\$7.0

## Entrées



ONION SOUP	\$2.0
SPRING EGG ROLL (2)	\$2.5
CRAB WONTON (5)	\$3.5
AGE TOFU	\$4.3
JALAPENO SPECIAL CHOICE	\$9.0
TUNA DUMPLING (6)	\$9.0
SALMON DUMPLING (6)	\$9.0
SEXY SALMON (6)	\$10.0
OLIVE TUNA (6)	\$13.0

## Sushi Rolls

AVOCADO ROLL	\$4.5
--------------	-------

# Ichiban Menu



CUCUMBER ROLL	\$4.5
YELLOWTAIL ROLL	\$5.0
SHRIMP TEMPURA ROLL	\$5.0

EEL AVOCADO ROLL	\$6.0
PHILADELPHIA ROLL	\$5.5
SPIDER ROLL	\$9.0
RAINBOW ROLL	\$13.8
SUSHI	

## Sizzling Teriyaki Entrees

VEGGIE TOFU SIZZLING TERIYAKI ENTRÉE	\$10.0
CHICKEN SIZZLING TERIYAKI ENTRÉE	\$13.0
CALAMARI SIZZLING TERIYAKI ENTRÉE	\$14.0
SHRIMP SIZZLING TERIYAKI ENTRÉE	\$16.0
SALMON SIZZLING TERIYAKI ENTRÉE	\$17.0
SCALLOP SIZZLING TERIYAKI ENTRÉE	\$17.0
N.Y. STRIP SIZZLING TERIYAKI ENTRÉE	\$18.0

RIBEYE SIZZLING TERIYAKI ENTRÉE	\$19.0
FILET MIGNON SIZZLING TERIYAKI ENTRÉE	\$22.0

## Ingredients Used



EDAMAME	\$4.0
SOFT SHELL CRAB	\$9.0
TUNA	\$5.0
RED SNAPPER	\$4.0
SHRIMP	\$3.0
SALMON	\$5.0
YELLOWTAIL	\$5.0
EEL	\$5.0
TOFU	\$3.0
SCALLOP	\$6.0
CHEESE	
SHRIMPS	
VEGETABLES	
GINGER	
SHRIMP	
MISO	
ONION	

# Ichiban

9500 N 129th E Ave #100, 74055,  
Owasso, US, United States

**Opening Hours:**  
Monday 11:00-21:00  
Tuesday 11:00-21:00  
Wednesday 11:00-21:00  
Thursday 11:00-21:00  
Friday 11:00-21:00  
Saturday 11:00-21:00

Made with [menuweb.menu](https://menuweb.menu)

